

# Understanding the Power of the Michigan Data Hub

e27 - Understanding the Power of the Michigan Data Hub

## REMINDERS:

Mark your attendance on your  
SCECH/CPE form

Course Name: E27 - Understanding  
the Power of the Michigan Data Hub

# Why Invest Your Time? Topics covered during presentation?

- Brief History/Collaboration
- MiDataHub cockpit application
- Statewide collaboration
- State Services
- Legislative Mandates
- Future Functionality
- Available supports

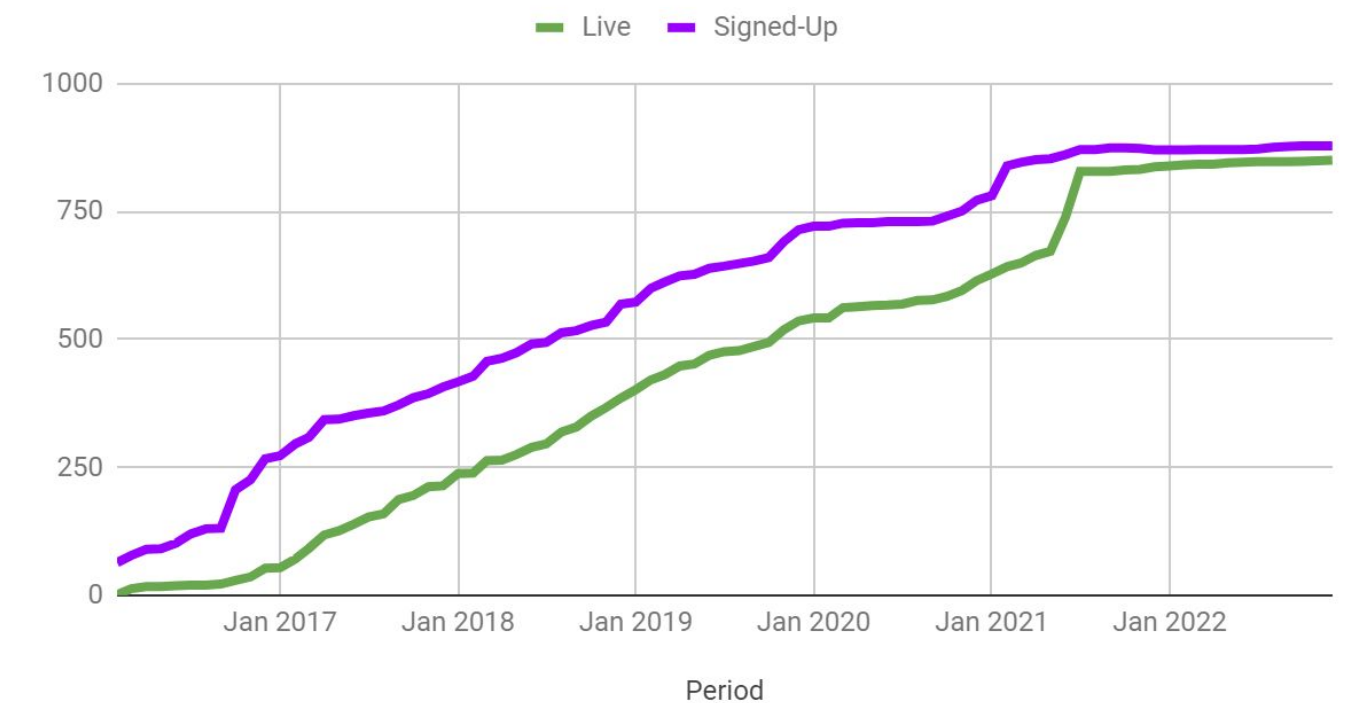
# A few obstacles in Michigan....Circa 2013

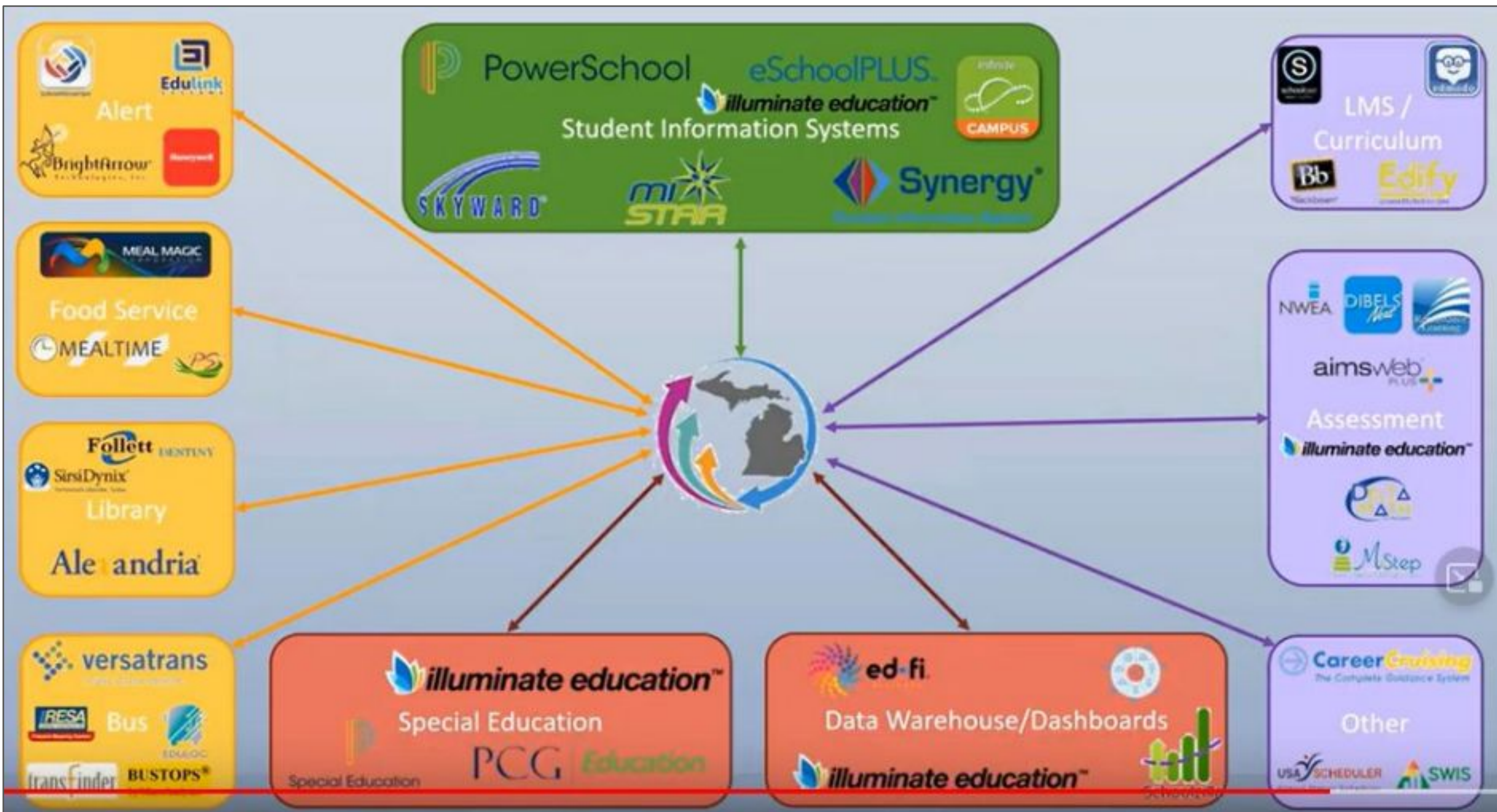
- ▶ Proliferation of data and Student Information systems
- ▶ Interoperability of educational data systems
- ▶ CSV-Based Integrations
- ▶ XML-Based reporting
- ▶ Major gaps in skill sets

# results..... up to 2024

- ▶ Addressed challenges in managing/using data across systems
- ▶ Standardization
- ▶ Districts remain in control
- ▶ Cost savings
- ▶ Shared statewide solutions (Milearn, MSDS reporting UIC Services, Snack Pack)
- ▶ 837 live districts in 2022-2023 for 1,579,379 students
- ▶ Over 10,000 Active Integration Instances

Live and Signed-Up





PowerSchool eSchoolPLUS  
illuminate education™  
Student Information Systems  
SKYWARD® miSTAR Synergy® Infinite Campus

LMS / Curriculum  
S Edmodo Bb Edify

Assessment  
NWEA DIBELS aimsweb PLUS illuminate education™ MStep

Other  
Career Cruising USA SCHEDULER SWIS

Data Warehouse/Dashboards  
ed-fi illuminate education™

Special Education  
illuminate education™ PCG Education

Food Service  
MEAL MAGIC MEALTIME PS

Library  
Follett HENTNEY SirsiDynix Ale andria

Alert  
Alert EduLink BrightArrow

# Cockpit Application



Michigan Data Hub > Anonymized Districts > MiDataHub Demo District Hello kevin.bullard@kresa.org! Log off

Agreements - Inventory - Reports - Utilities - MSDS - Features -

### Manage District: MiDataHub Demo District

Region : Michigan Data Hub  
ISD/Intermediate District Code : Anonymized Districts  
District : MiDataHub Demo District, Id: 983, Code: 900014  
District Type : LEA  
Address : , ,  
URL :  
Current School Year : 2022-2023 (populated) ▼  
SFTP Password : .....  District Folder  
Integration Server : HUB-ETL304  
District Status : Active ▼

### Manage Authorizations

Name	Email	Authorizations	Actions
Kevin Bullard	kevin.bullard@kresa.org	District Superintendent	<input type="button" value="Edit"/> <input type="button" value="Delete"/>
Kevin Bullard	kevinbullard@gmail.com	Technical Contact District Superintendent	<input type="button" value="Edit"/> <input type="button" value="Delete"/>
Windee Wagner	windee.wagner@kresa.org	Technical Contact	<input type="button" value="Edit"/> <input type="button" value="Delete"/>
Dirk Bradley	Dirk.bradly@kresa.org	Technical Contact	<input type="button" value="Edit"/> <input type="button" value="Delete"/>

#### Inbound Integrations (show all)

- [Add Integration](#)

#### Outbound Integrations (show all)

- [Add Integration](#)

#### API Integrations (show all)

- [Student Information System: Infinite Campus 1](#)
- [Assessment System: i-Ready 1](#)
- [Assessment System: DRC Smarter Balanced Assessments 1](#)
- [Data Warehouse: Eidex Insights 1](#)
- [Educational Analytics: Extended Benchmark Studies 1](#)
- [Add Integration](#)

**Cockpit application** – allows districts to create integrations and manage everything MiDataHub related.

Each district has their own ODS for each school year that they can fully manage, including:

- ▶ Manage Integrations
- ▶ Manage Access
- ▶ Run Reports and Utilities
- ▶ Agreements
- ▶ MSDS
- ▶ Features
- ▶ and more

# Cockpit Application - Integrations



Michigan Data Hub > Anonymized Districts > MiDataHub Demo District Hello kevin.bullard@kresa.org! Log off

Agreements - Inventory - Reports - Utilities - MSDS - Features -

### Manage District: MiDataHub Demo District

Region : Michigan Data Hub  
ISD/Intermediate District Code : Anonymized Districts  
District : MiDataHub Demo District, Id: 983, Code: 900014  
District Type : LEA  
Address : , ,  
URL :  
Current School Year : 2022-2023 (populated) ▼  
SFTP Password : .....  District Folder  
Integration Server : HUB-ETL304  
District Status : Active ▼

### Manage Authorizations

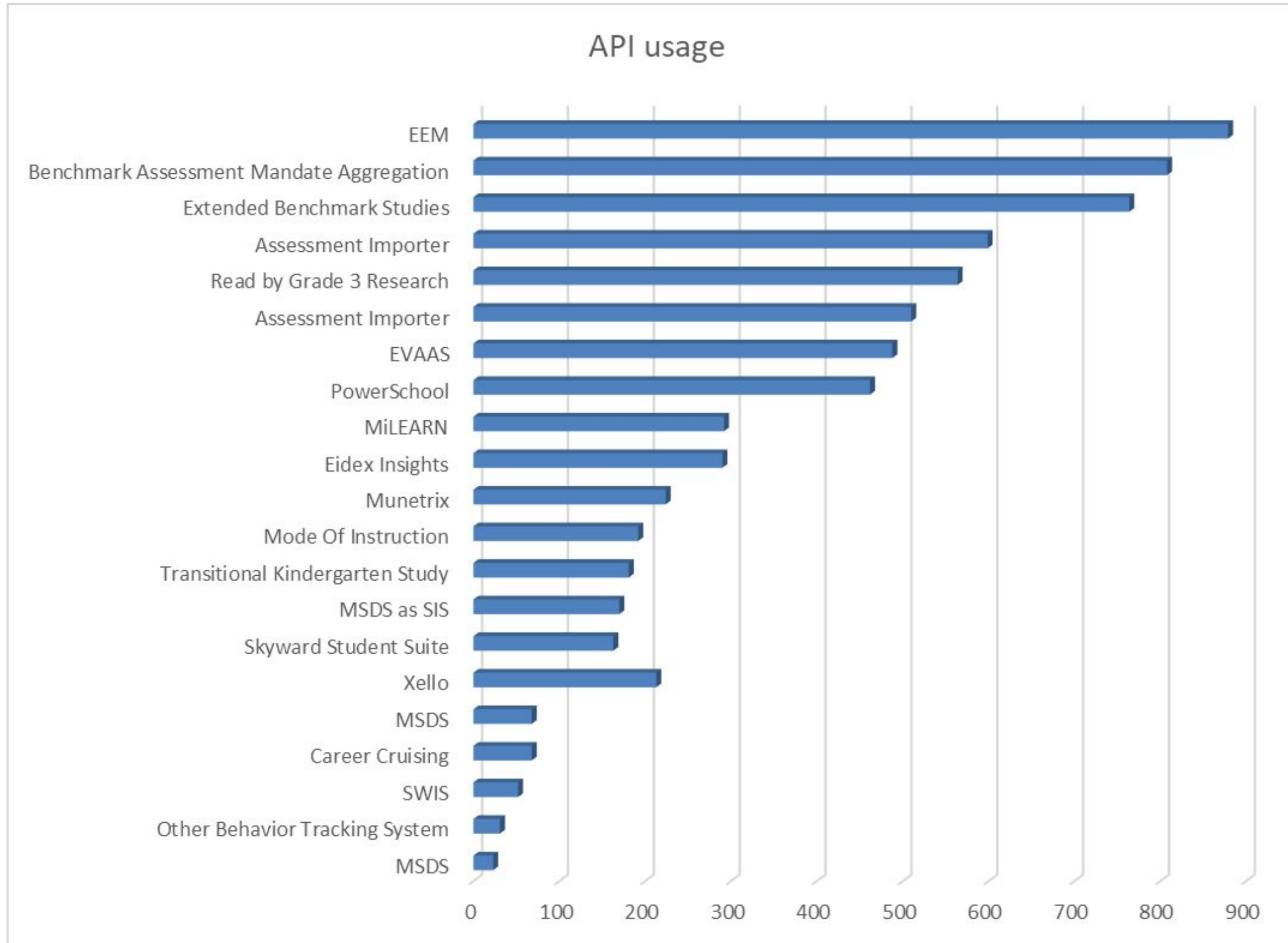
Name	Email	Authorizations	Actions
Kevin Bullard	kevin.bullard@kresa.org	District Superintendent	<input type="button" value="Edit"/> <input type="button" value="Delete"/>
Kevin Bullard	kevinbullard@gmail.com	Technical Contact District Superintendent	<input type="button" value="Edit"/> <input type="button" value="Delete"/>
Windee Wagner	windee.wagner@kresa.org	Technical Contact	<input type="button" value="Edit"/> <input type="button" value="Delete"/>
Dirk Bradley	Dirk.bradly@kresa.org	Technical Contact	<input type="button" value="Edit"/> <input type="button" value="Delete"/>

Inbound Integrations (show all)	Outbound Integrations (show all)	API Integrations (show all)
<ul style="list-style-type: none"><li>Add Integration</li></ul>	<ul style="list-style-type: none"><li>Add Integration</li></ul>	<ul style="list-style-type: none"><li>Student Information System: Infinite Campus 1</li><li>Assessment System: i-Ready 1</li><li>Assessment System: DRC Smarter Balanced Assessments 1</li><li>Data Warehouse: Eidex Insights 1</li><li>Educational Analytics: Extended Benchmark Studies 1</li><li>Add Integration</li></ul>

- ▶ **API Integrations** – Ability to generate a key/secret and provide connection details to upstream and downstream systems.
- ▶ **Inbound Integrations** – Ability to load data from flat files. These are largely manually created for important data sets like assessments, discipline data, etc.
- ▶ **Outbound Integrations** – Ability to export flat files in formats needed by downstream systems.



# Integrations...where we are now



# API integrations on the horizon....in collaboration with the Ed-Fi Alliance

- ▶ SWIS
- ▶ NWEA
- ▶ numerous other partnering vendors as it relates to legislative initiatives and requests from districts.
- ▶ How can you help?

# Statewide collaboration



- ▶ State Agencies
  - ▶ Michigan Department of Education (MDE)
  - ▶ Center for Educational Performance and Information (CEPI)
- ▶ Intermediate School Districts (ISDs and RESAs)
  - ▶ Career & Technology Education
  - ▶ Countywide Special Ed Systems
  - ▶ Early Childhood
  - ▶ Technology Support (DHSS, METL, and more)
- ▶ Associations
  - ▶ Michigan Association of Intermediate School Districts (MAISA)
  - ▶ Michigan Association of School Administrators (MASA)
  - ▶ Michigan School Business Officials (MSBO)
  - ▶ MiCH IT
  - ▶ Elementary and Secondary Principal Groups

# Statewide Actionable Data Systems



- ▶ [MiRead](#) – Tool created to respond to the 3rd Grade Reading law, now a tool to monitor and improve literacy
- ▶ [MiStrategyBank](#) – Houses educational strategies at student and school levels that can be used for improvement plans in other tools
- ▶ [MICIP](#) – Michigan Integrated Continuous Improvement Process, Michigan Department of Education school improvement tool
- ▶ [MiLearn](#) – MDE System that provides state assessment results to parents, students and educators using MiDataHub roster data
- ▶ Many other [3rd party partnering vendors](#)





# MiCH Solutions

[gomaisa.org/mich](http://gomaisa.org/mich)



**Michigan Collaboration Hub**

An MAISA Guiding Council



**MiDataHub**

Kalamazoo  
**RESA**  
*inspiring educational  
excellence*

## K12 Service Desk



**MiService  
Desk**



## K12 Fiber Transport



**SEN**  
STATE EDUCATION NETWORK



**Ottawa Area ISD**  
Learn. Serve. Lead.



**MAISA** | MICHIGAN ASSOCIATION  
OF INTERMEDIATE SCHOOL  
ADMINISTRATORS

## K12 Data Interoperability



**MICHIGAN  
DATAHUB**

## K12 Application Development



**MiCH IT**

Kalamazoo  
**RESA**  
*inspiring educational  
excellence*

Kalamazoo  
**RESA**  
*inspiring educational  
excellence*

## K12 Cloud Hosting



**MiCloud**

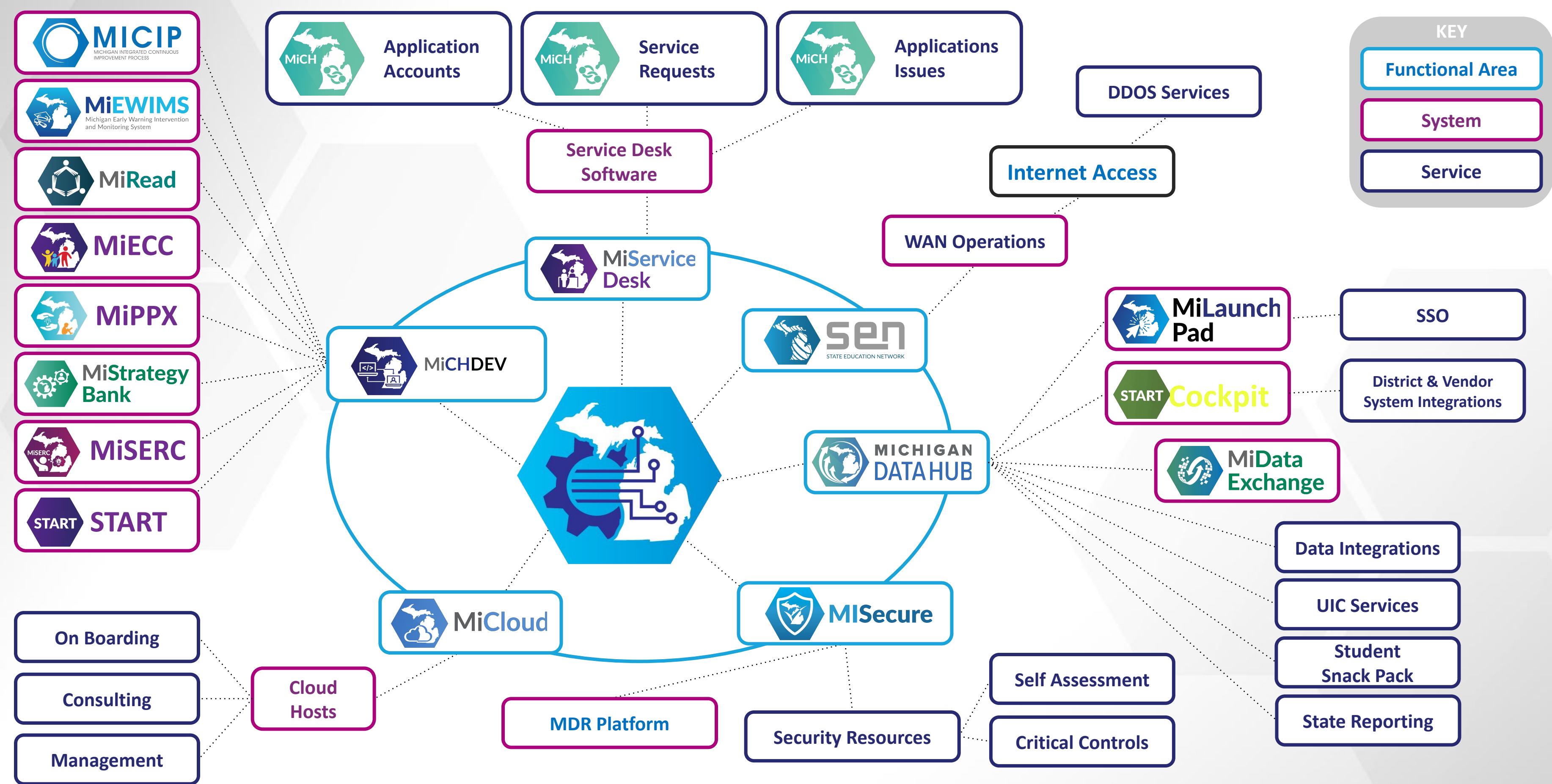
## K12 Cyber Security



Ingham  
Intermediate  
School District



**MI Secure**



# State Services (API Service)

The API Service in MiDataHub provides end users a dynamic integration for obtaining critical data at the time of a student's enrollment that in the past was only available through a separate integration, file-based integration.

## Available API Services

- UIC Services
- Snack-Pack Service
- Direct Certification



### UIC Services

Integration Status: *Production*  
Integration Type: *Ed-Fi API*

Product/Initiative: *Feature*

System: *State of Michigan System*

The UIC Services API provides school districts a streamlined, efficient, and timely way to search for student unique identification codes (UICs) from CEPI. The process uses the Ed-Fi Identities API allowing SIS tools (and its users) to automatically search, resolve, link, and request UICs. These searches (which can be done individually or in bulk) take seconds to perform and eliminates the need to access CEPI's Michigan Student Data System (MSDS).



### Portable Student Records Service (Snack-Pack)

Integration Status: *Production*

Integration Type: *Ed-Fi API*

Product/Initiative: *Feature*

System: *Student Information System (SIS)*

This portable student record service, known as the "Snack-Pack," provides a small set of critical student data for students newly transferred to your district. Based on the most recent records submitted to the State by the previously enrolled district, the Snack-Pack contains targeted data so educational staff know what services students are eligible for upon enrollment in the school district. Without the timely delivery of these data, which historically might have taken weeks or months to receive, students may not receive services they're entitled to in a timely manner. Please note this service is intended for newly transferred students. If the service is run for students that are not newly transferred, you will receive 'blank' or 'false' values for each field.



### Direct Certification

Integration Status: *Production*

Integration Type: *Ed-Fi API*

Product/Initiative: *Feature*

System: *Food Service, State of Michigan System, Student Information System (SIS)*

The Direct Certification service was developed in collaboration with CEPI to provide end users a lookup process in the Student Information System that allows an authorized Food Service System district user to search CEPI's direct certification data to determine whether a child is eligible for free/reduced meals via direct certification. This lookup will also allow authorized FSS district users the ability to request data from the most recent Direct Certification refresh for their district. The benefit of this service is to provide a student's eligibility upon enrollment so the data can be consumed by the SIS, compatible food service systems, and any additional application downstream that is able to consume the data for reporting, or other services.

Additional benefits of this service include:

- Eliminating the need for users to login to a state system, download the data, and import back into your system.
- Minimizes files with sensitive data on users local computer/networks
- Allows districts to determine eligibility as soon as a new student is enrolled

Currently, the service is available for any Student Information System (SIS) and food service provider to integrate. The list of compatible Student Information systems are below. As more food service providers integrate we will provide a compatibility chart them as well.

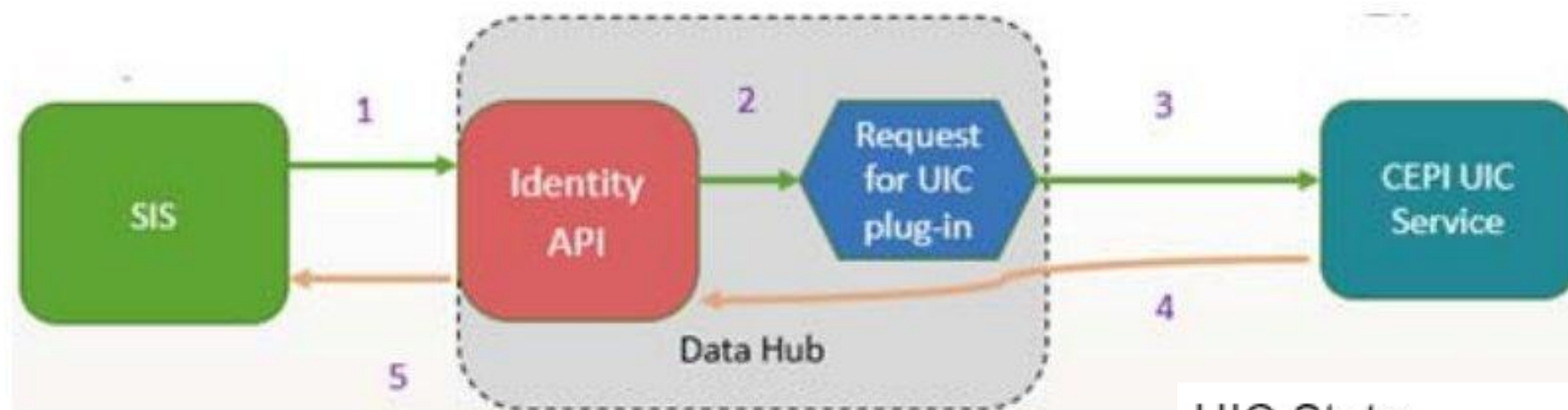


# State Services - UIC Service

Provides districts with a streamlined, efficient, automatic way to search, resolve, link, and request UICs directly from the SIS.

- Creates efficiencies at local level by providing all UIC Management tasks from SIS, without need to login to MSDS.
- UIC Services functions independent of MSDS accessibility; when MSDS down, UIC Services allows for UIC Management tasks to continue.
- Messaging and notifications at enrollment

More information found at the MiDataHub Product Catalog Page entry: [Link to UIC Services](#)



UIC Stats:

School Year	# Districts	# Searches	# New UICs
2023-24 (to date)	596 (+14)	215,000	50,000
2022-23	541	305,740	59,520

# State Services - Snack-Pack

Provides critical student data for new enrollments upon enrollment in SIS.  
 ONLY AVAILABLE for “newly enrolled students”

- 31 fields critical to help districts identify what services students are entitled to receive in a timely manner.
- **Allows additional SIS functionality for messaging and notifications at enrollment**
  - Example, distinct automated messages to staff based on snack-pack data

MIDATAHub - Snackpack			
Snackpack Updated: Aug 29 2022 1:33PM			
Student Snackpack			
Attribute	Value		
Last MSDS As Of Date	06/30/2022	SpecEd Plan Date	03/04/2022
USC	8887109088	SpecEd Exit Date	
Previous District or PSA	Dearborn City School District (82030)	SpecEd Primary Disability	Specific Learning Disability
Previous School or PSA	Bryant Middle School	SpecEd Program Svc	Elementary or Secondary-Level Resource Program
Grade Level	Sixth Grade (06)	Home Languages	English
FTE General Education	0.97	Primary Language	
FTE Special Education	0.03	LEP Instructional Program	English As a Second Language (ESL) Instruction
FTE Section 53	0.00	LEP Eligible	true
Entry Reason	Expected to continue in the same school district	LEP End Date	
Exit Reason		LEP End Date - State Auto Exit	
Exit Date		Program Participation	Section 31a At Risk
Total Days Attended/Possible	153/175	Section 35a Reading Deficiency	false
Total Days Removed		Section 35a Term-End Status	
Previous School In CEP	true	Early Childhood Programs	
Economically Disadvantaged	true	Foster Care	false
		Homeless	false
		Migrant	false

List of available fields included in this process: [CEPI – Portable Student Records Service](#)

More information found at the MiDataHub Product Catalog Page entry: [Link to Snack-Pack](#)

# State Services - Direct Certification

Integration allows for direct certification files to be available in without the need to upload/download files between MSDS and SIS.

- Allows for further efficiencies to be achieved through vendor tools
- File is available and stored in database awaiting processing with notification available to Food Service staff or State Reporting personnel responsible for processing.

# State Services - Assessment Services



Transfers state assessment (M-STEP) as well as PSAT and SAT to your MiDataHub environment

Benefits Include:

- ▶ Data available for use in other downstream systems
- ▶ Districts get data for the students they have rather than the students tested.
- ▶ Real time reporting on student assessment results.

# Legislative Initiatives: Benchmark Assessment



- ▶ **Benchmark Assessment Mandate** – Provides data to U of M and MSU to provide reporting on learning loss due to the COVID-19 Pandemic
  - ▶ DRC, i-Ready, NWEA and Star assessment data
  - ▶ 2022-23 legislatively mandated initiative:
    - ▶ Over 750 districts made assessment results through the Michigan Data Hub
  - ▶ 2023-24 Legislatively non-mandated initiative:
    - ▶ 612+ districts provided assessment results through the Michigan Data Hub



# Cockpit application - Features



The screenshot shows the Michigan DataHub Cockpit application interface. At the top, there is a navigation bar with the DataHub logo and the text "Michigan Data Hub" on the left, and "Management Portal" and "Hello kevin.bullard@kresa.org! Log off" on the right. Below the navigation bar is a menu with options: Agreements, Inventory, Reports, Utilities, MSDS, MiLEARN, State System, and Features. The "Features" menu is open, showing options: MSDS, MICIP, Benchmark Assessment Mandate (highlighted), MiDataHub Data Quality, and Michigan Data Exchange.

The main content area is divided into two sections. The left section is titled "Manage District:" and contains a form with the following fields: Region, ISD/Intermediate District Code, District, District Type, Address, Current School Year (set to 2023-2024 (populated)), SFTP Password, Integration Server (set to HUB-ETL302), and District Status (set to Active). There are "Submit" and "Cancel" buttons at the bottom of the form.

The right section is titled "Benchmark Assessment Mandate Status for [District Name]". It contains a "Links" section with a link to "Benchmark Assessment Mandate Readiness Dashboard Checklist". Below this is a "Checks" section with a "Required" subsection. The "Required" checks are: Key Integrations Status (SIS - 1 passed - 1 info, Assessments - 1 passed, Benchmark Assessment Mandate - 1 passed), Data Readiness Status-Current Year (Data Readiness Status - 1 passed), and an "Optional" subsection for Data Readiness Status-Current Year (Data Readiness Status - 9 info). The "Optional" checks are: Students With NWEA Assessments, Beginning of Year - NWEA Assessment integration not configured; Students With NWEA Assessments, End of Year - NWEA Assessment integration not configured; Students With Renaissance Star Assessments, Beginning of Year - Star integration not configured; Students With Renaissance Star Assessments, End of Year - Star integration not configured; Students With i-Ready Assessments, Beginning of Year - 473 i-Ready assessment records exist for the 508 students in grades where the i-Ready assessment was given. - Assessment records by grade level: 00 - 51, 01 - 57, 02 - 56, 03 - 46, 04 - 42, 05 - 49, 06 - 50, 07 - 71, 08 - 51; Students With i-Ready Assessments, End of Year - 0 i-Ready assessment records exist for the 0 students in grades where the i-Ready assessment was given; Students With DRC Assessments, Beginning of Year - DRC integration not configured; Students With DRC Assessments, End of Year - DRC integration not configured; and Mode Of Instruction - | FULLY IN-PERSON: 75, 100%.

**Features** – Allow districts to validate the quality of data against systems ingesting the data.

# Legislative Initiatives: 23G



The purpose of the MI Kids Back on Track is to support programs provided before school, during school, after school, or during the summer directly by the eligible recipient or in partnership with community-based organizations for students in any of grades pre-K to 12 in this state that is designed to:

- ▶ Address unfinished learning.
- ▶ Get students to grade-level academic standards.
- ▶ Provide additional academic assistance to students at risk of falling behind their peers.
- ▶ Help high school students prepare for postsecondary education. [MCL 388.1623g(13)].
- ▶ [Legislative Language](#)

MI Kids Back on Track

# 23G - Upcoming



1. SIS Vendor adding Cohorts
2. Once completed, district will designate cohort for each student:
  - ▶ Expanded Learning Time
  - ▶ Intensive Individualized Support
  - ▶ Locally Provided Tutoring
  - ▶ Personalized Learning Environments
  - ▶ Career Pathways
  - ▶ Work Based Learning Experiences
  - ▶ EWIMS HIT
3. New data validation checks available in the features section in the MiDataHub cock





MICHIGAN  
DATAHUB

## Application Support

The Michigan Data Hub is a collaborative, statewide effort to address the challenges in managing and using school data by creating an ecosystem where information is exchanged between the large number of disconnected data systems used by schools.

MiDataHub Support

# Need a helping hand when you return home?

Introducing Our Help Desk Portal

<https://miservicedesk.com>

Please review [this document](#) for details on placing a support ticket.

# Support - Available resources

- ▶ [Training videos and documentation](#) on website
- ▶ [Online product catalog](#) with product specific documentation
- ▶ Data Hub Support Specialist Network
- ▶ Back to school webinar (May 22, 10-11AM)
  - ▶ [Registration Link](#)
- ▶ Monthly status calls with each SIS Vendor Partner.
- ▶ Periodic newsletter
  - ▶ [Sign up here](#)
- ▶ [2nd Annual Users Conference october 14-15, 2024](#)

# Future Functionality

- ▶ **Enhanced validation reporting:** Allows a quick analysis of readiness against state initiatives, 3rd party integrations, and more.
- ▶ **Management Portal** – Allows vendors, researchers, and initiative managers to log in and see details related to integrated districts readiness for consumption of data.
- ▶ **Dynamic Product Catalog** – Collects information from each system vendor on their products, including documentation on integration steps. The catalog can be searched by districts and can include all fields read and written
- ▶ **District Data Governance Tool** – Allows districts to define their processes, who is responsible, what data is managed, and any data quality issues
- ▶ **Enhanced MiDataHub cockpit UI**
- ▶ **Enrollment Transfer Process** - Similar process as Snack-Pack but MORE data. Think of the data available as resembling a CA-60

