



ESSER II and GEER II (EANS) FUND OVERVIEW

Kevin Walters

Michigan Department of Education

# Introduction

Kevin Walters

Supervisor

Grants Contracts &  
School Support

Office of Financial  
Management

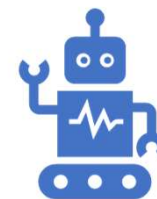
Michigan Department  
of Education



ESSER II Fund Overview



ESSER II Allowable Expenses



GEER II - Emergency Assistance  
for Nonpublic Schools (EANS)

# Topics

## ESSER II Fund Overview

- Allocation based on 2020-2021 Title I, Part A
- LEA/PSA eligible members should expect about 4 times their ESSER-I Formula allocation
- MDE will release Memo with link to projected allocation amounts
- NO Equitable Service requirement in ESSER-II
- Still NO Supplement v Supplant requirement
- All 12 previous Grant Use Areas remain, with additional areas within ESSER-II
- Lots of projections floating around. Please be patient as MDE calculates accurate allocations

# FUNDING CATEGORIES

1. Any activity authorized by the ESEA of 1965.....**ESSER-F**
2. Coordination of preparedness and response efforts of local educational agencies with state, local, tribal, and territorial public health departments, and other relevant agencies, to improve coordinated responses among such entities to prevent, prepare for, and respond to coronavirus. ....**ESSER-F, CRF (SEC 103(2), 602, AND 11P)**
3. Providing principals and other school leaders with the resources necessary to address the needs of their individual schools.....**ESSER-F**
4. Activities to address the unique needs of low-income children or students, children with disabilities, English learners, racial and ethnic minorities, students experiencing homelessness, and foster care youth, including how outreach and service delivery will meet the needs of each population. ....**ESSER-F, GEER**
5. Developing and implementing procedures and systems to improve the preparedness and response efforts of local educational agencies. ....**ESSER-F**
6. Training and professional development for staff of the local educational agency on sanitation and minimizing the spread of infectious diseases. ....**ESSER-F, CRF (SEC. 103(2) AND SEC. 11P)**
7. Purchasing supplies to sanitize and clean the facilities of a local educational agency, including buildings operated by such agency. ....**ESSER-F, CRF (SEC. 103(2) AND SEC. 11P)**
8. Planning for and coordinating during long-term closures, including for how to provide meals to eligible students, how to provide technology for online learning to all students, how to provide guidance for carrying out requirements under the Individuals with Disabilities Education Act (20 U.S.C. 1401 et seq.) and how to ensure other educational services can continue to be provided consistent with all federal, state, and local requirements. ....**ESSER-F, GEER, CRF (SEC 103(2), 602, AND 11P)**
9. Purchasing educational technology (including hardware, software, and connectivity) for students who are served by the local educational agency that aids in regular and substantive educational interaction between students and their classroom instructors, including low-income students and students with disabilities, which may include assistive technology or adaptive equipment. ....**ESSER-F, ESSER-EE, GEER, CRF (SEC 103(2), 602, AND 11P)**
10. Providing mental health services and supports. ....**ESSER-F, ESSER-EE, GEER**
11. Planning and implementing activities related to summer learning and supplemental afterschool programs, including providing classroom instruction or online learning during the summer months and addressing the needs of low-income students, students with disabilities, English learners, migrant students, students experiencing homelessness, and children in foster care. ....**ESSER-F, GEER**
12. Other activities that are necessary to maintain the operation of and continuity of services in local educational agencies and continuing to employ existing staff of the local educational agency. ....**ESSER-F**

## ESSER II Allowable Expense Areas

- 12 Allowable Grant Use Areas from ESSER-I Formula, Plus:
  - Addressing learning loss among students, including low-income students, children with disabilities, English learners, racial and ethnic minorities, students experiencing homelessness and children and youth in foster care, of the local educational agency, including by:
    - Administering and using high-quality assessments that are valid and reliable, to accurately assess students' academic progress and assist educators in meeting student's academic needs, including through differentiating instruction
    - Implementing evidence-based activities to meet the comprehensive needs of students
    - Providing information and assistance to parents and families on how they can effectively support students, including in a distance learning environment
    - Tracking student attendance and improving student engagement in distance education

## ESSER II Allowable Expense Areas

- 12 Allowable Grant Use Areas from ESSER-I Formula, Plus:
  - School facility repairs and improvements to enable operation of schools to reduce risk of virus transmission and exposure to environmental health hazards, and to support student health needs
  - Inspection, testing, maintenance, repair, replacement, and upgrade projects to improve the indoor air quality in school facilities, including mechanical and non-mechanical heating, ventilation, and air conditioning systems, filtering, purification and other air cleaning, fans, control systems, and window and door repair and replacement

# GEER II Emergency Assistance for Nonpublic Schools (EANS) Fund Overview

- Funds dedicated to eligible Nonpublic Schools in Michigan
- Total allocation to Michigan is just over \$86,000,000
- Application will be completed by Nonpublic School
- Financial support must be in Services/Supports, as typical
- Decisions remain regarding oversight of funds (SEA v LEA v Third Party)
- Statute identified 13 allowable grant use areas for EANS
- Funding based on priorities of low income AND four identified factors related to impact of emergency
  - *(1) loss of tuition revenue;*
  - *(2) decrease in enrollment;*
  - *(3) lack of capacity to provide remote learning due to insufficient technological support, and*
  - *(4) data documenting the extent of learning loss attributable to the educational disruptions caused by COVID-19*



GEER II  
Emergency  
Assistance for  
Nonpublic  
Schools  
(EANS)  
Allowable Use  
Areas

1. Supplies to sanitize, disinfect, and clean school facilities
2. Personal Protective Equipment (PPE)
3. Improving ventilation systems, including windows or portable air purification systems to ensure healthy air in the nonpublic school
4. Training and professional development for staff on sanitation, the use of PPE, and minimizing the spread of infectious diseases
5. Physical barriers to facilitate social distancing
6. Other materials, supplies, or equipment to implement public health protocols, including guidelines and recommendations from the Center for Disease Control and Prevention (CDC) for the reopening and operations of school facilities to effectively maintain the health and safety of students, educators, and other staff during the qualifying emergency

GEER II  
Emergency  
Assistance for  
Nonpublic  
Schools  
(EANS)  
Allowable Use  
Areas

7. Expanding capacity to administer coronavirus testing to effectively monitor and suppress coronavirus, to conduct surveillance and contact tracing activities, and to support other activities related to coronavirus testing for students, teachers, and staff at the nonpublic school
8. Educational technology (including hardware, software, connectivity, assistive technology, and adaptive equipment) to assist students, educators, and other staff with remote or hybrid learning
9. Redeveloping instructional plans, including curriculum development, for remote learning, hybrid learning, or to address learning loss
10. Leasing of sites or spaces to ensure safe social distancing to implement public health protocols, including guidelines and recommendations from the CDC

GEER II  
Emergency  
Assistance for  
Nonpublic  
Schools  
(EANS)  
Allowable Use  
Areas

11. Reasonable transportation costs
12. Initiating and maintaining education and support services or assistance for remote learning, hybrid learning, or to address learning loss; or
13. Reimbursement for the expenses of any services or assistance described above that a nonpublic school incurred on or after March 13, 2020, except for services or assistance under (3) (other than portable air purification systems, which are an allowable reimbursable expense), (4), (9), and (12)) or any expenses reimbursed through a loan guaranteed under the Paycheck Protection Act (15 U.S.C 636(a)) as of December 27, 2020



# Reporting

- ESSER-II and GEER-II reporting:
  - Monthly Financial Reporting for SEA
  - Nothing required by districts
- Monitoring
  - MDE will coordinate monitoring of ESSER-II and GEER-II funds
  - Risk-based approach
  - Desk reviews

# CARES Act and Nonpublic School Resources

- CARES Act Grant webpage: <https://www.michigan.gov/mde/0,4615,7-140-5236-528117--,00.html>
- MDE Nonpublic Schools webpage: [MDE - Nonpublic & Home Schools \(michigan.gov\)](#)

# Questions?

**Kevin Walters**

**Supervisor, Grants Contracts & School Support**

**Office of Financial Management**

**517-335-0543 (office) or 810-728-5254 (cell)**

**[MDE-CARES@michigan.gov](mailto:MDE-CARES@michigan.gov) or [waltersk5@michigan.gov](mailto:waltersk5@michigan.gov)**