

ESSER II Fund Overview

When will remaining
ESSER-II formula (57%)
funds be available to draw?

All ESSER II funds were loaded into
the budget page for ESSER II on
September 1, which can be found
within the ESSER I Formula
application in M+

No strings attached to release
of remaining funds. **No**
spending plan submission, etc.

Section 23 Funds

When will Section 23b and 23c funds be available to draw?

All Section 23b and 23c applications are live in MEGS+ as of September 8. Individual applications can be found for Summer School, Credit Recovery, Before/After School, and Teacher/Support Staff Stipends

All Section 23b and 23c funding is tied to the ESSER II allowable grant use areas and are reimbursable (federal funds)

Section 23b and 23c Timelines

Section 23b and 23c and Timelines:

- **Innovative Practices** (will be proration) and SAF Equalization (for those 14 entities that were ineligible under PA 3) payments were in the August 20 State Aid Payment. There will be another adjustment to Innovative Practices (***further proration***) in **October state aid** based on application irregularities from LEAs
- Reminder: Statute clearly specifies **Teacher and Support Staff stipends** must be paid in full to Teacher or Support Staff member within 30 days of the entity receiving those funds. Section 23c application went “live” on September 8. The clock begins for localized payments by October 8
 - *Pay staff YOU identified as eligible in July submission*
- (Local entity is responsible for all mandatory payments. ORS has notified MDE that these stipends are not retirement reportable on DTL 2 but ARE REPORTABLE on DTL 4). **Please contact ORS with questions or concerns.**

Section 23b and 23c Hot Topics

**“Dude...I can’t find my car,
errr application...”**

**Applications have been in
MEGS+ since September 8.
PLEASE check your
Tasks/Applications FIRST.
Don’t search for Apps!**

**81 districts submitted
irregularities. 13 didn’t
submit at all in July. MDE is
notifying those entities**

Section 23b and 23c Hot Topics

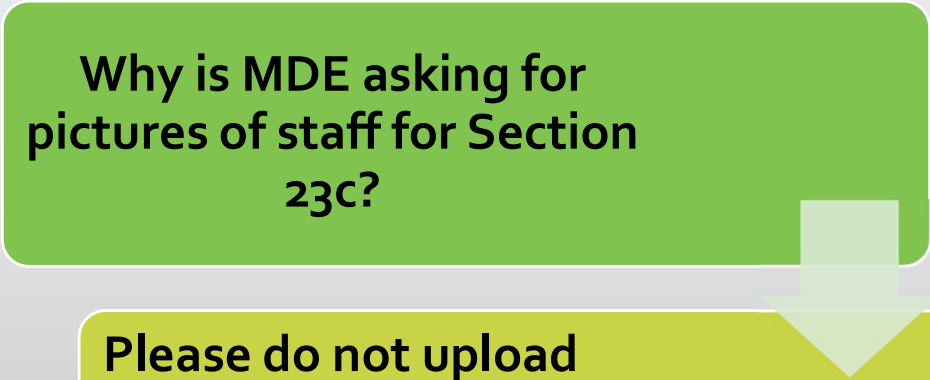
**Does the Section 23b
money have to be spent in
summer 2021?**

**No. Section 23b utilizes
Federal funds, aligned with
ESSER II grant expenditure
period**

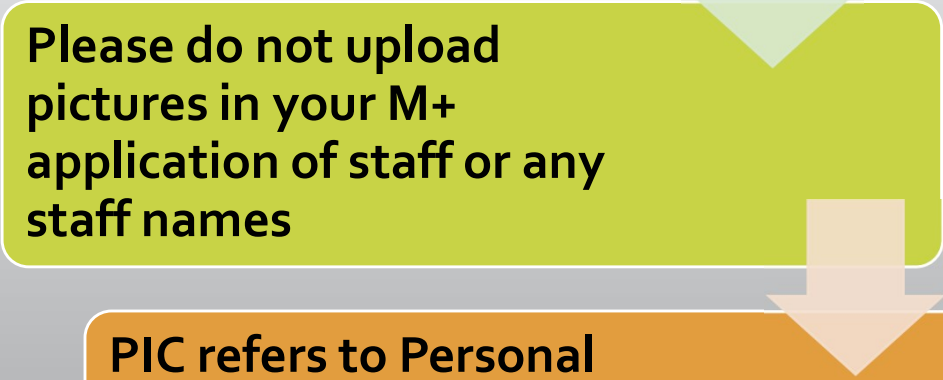
**Expenditure Period: June 2,
2021, through Sept. 30,
2022, plus Tydings through
Sept. 30, 2023**

Section 23b and 23c Hot Topics

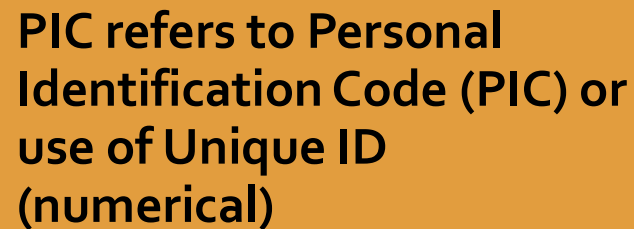
**Why is MDE asking for
pictures of staff for Section
23c?**



**Please do not upload
pictures in your M+
application of staff or any
staff names**



**PIC refers to Personal
Identification Code (PIC) or
use of Unique ID
(numerical)**



Section 23b and 23c Hot Topics

**When do I have to pay
Section 23c Stipends?**

**Stipend payments to staff
must be made by October 8**

**There can be no proration
to stipend amount. Staff
gets full payment of stipend**

Section 23b and 23c Hot Topics

Who do I have to pay the
Section 23c stipend to?

LEAs were asked to identify
eligible staff members in
your July submission

Although staff may be
eligible via statute, you are
only required to pay those
staff members **YOU**
identified as eligible in July

Section 23b and 23c Hot Topics

How do I budget Salaries
with no Benefits for
Section 23c stipends?

Since stipend must be paid
in full, enter amount in
Salaries and enter "0" in
associated Benefits column

An error message will occur
if there is Salary, but
Benefits is blank. Enter "0"

Section 23b and 23c Hot Topics

**Do summer school
teachers need to be Highly
Qualified?**

**No. ESSER funds are not
Title funds. There is no
Highly Qualified in ESSER**

**Summer Programming
teachers must possess the
minimum certification in
Michigan (sub permit)**

Section 23b and 23c Hot Topics

What if my expenses are less than the costs of Section 23b programming?

Only budget to expenses in M+. Funds are reimbursable in nature

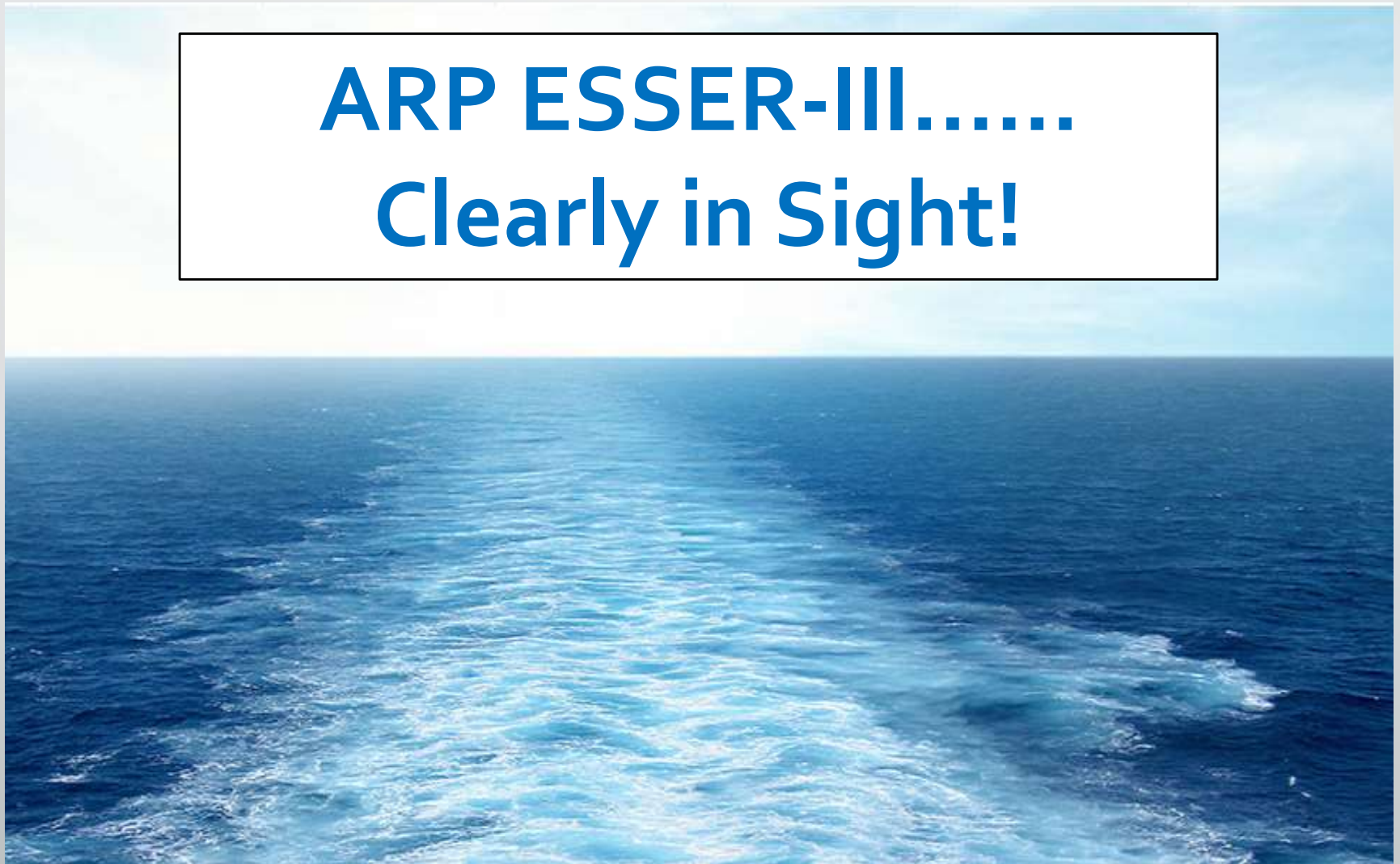
Please note the funds can be used across school years, not only in Summer 2021

ESSER-II and PA 48 of 2021

Public Act 48 of 2021: State Aid Bill

- Section 11t (Equalization payments): This funding has been appropriated by the legislature, but Michigan has not yet received approval of our application to USED for the remaining 1/3 of funds for ARP ESSER III
- MDE would not recommend LEAs start incurring costs associated with Section 11t (Equalization payments) until full approval is gained by MDE from USED and further guidance is provided. Memo is forthcoming.

**ARP ESSER-III.....
Clearly in Sight!**



ARP ESSER III LEA Requirements

Safe Return to In-Person Instruction and Continuity of Services (**within 30 days of receipt of LEA allocation**)

- *If LEA had plan in place prior to ARP, public input is considered met, you must update existing plan within 6 months to meet Interim Final Requirements*

Reservation to Address the Academic Impact of Lost Instructional Time

Maintenance of Equity for High-Poverty Schools

LEA Plan for Use of ARP ESSER Funds



LEA Plan for Use of ARP ESSER Funds Meaningful Consultation with Stakeholders


Under this requirement, an LEA must engage in meaningful consultation with stakeholders and give the public an opportunity to provide input in the development of its plan. Specifically, an LEA must engage in meaningful consultation with students; families; school and district administrators (including special education administrators); and teachers, principals, school leaders, other educators, school staff, and their unions. Additionally, an LEA must engage in meaningful consultation with each of the following, to the extent present in or served by the LEA: Tribes; civil rights organizations (including disability rights organizations); and stakeholders representing the interests of children with disabilities, English learners, children experiencing homelessness, children in foster care, migratory students, children who are incarcerated, and other underserved students.

This requirement remains for the *LEA Plan for Use of Funds*. It is not considered met based on previous submissions of COVID Learning Plans to CEPI

MDE has embedded the requirement into the ARP ESSER III application in MEGS+

ESSER III Application and Requirements for LEA Plan for Use of ARP ESSER Funds?

- MDE is currently reviewing federal guidance and is **awaiting approval of ARP ESSER III application for the remaining 1/3 of funds from USED**
- The ARP ESSER III application in MEGS+ opened on **September 15. ONLY 2/3 OF YOUR TOTAL ALLOCATION IS PRESENT IN YOUR ARP ESSER III BUDGET!**
- ARP ESSER III requires a deadline to submit, established by the SEA (MDE). Target at this point is 90 days or on **December 15** for initial submission
- Application in M+ will contain required narrative responses and a template (created by MDE) that includes all LEA Plan for Use items that you will upload within the application in M+. **(PLEASE NOTE: The LEA Plan is NOT due within 90 days, only the initial submission of the application)**



ARP ESSER III Application..... Resources for Plan Development

[Guidance for COVID-19 Prevention in K-12 Schools | CDC](#)

[ED COVID-19 Handbook, Volume 2 \(PDF\)](#)



Questions?

ESSER & GEER, MEGS+, Budgets, Applications

Kevin Walters

Supervisor, Grants Contracts & School Support

Office of Financial Management

517-335-0543 (office) or 810-728-5254 (cell)

MDE-CARES@michigan.gov or waltersk5@michigan.gov

CRF, Grant Accounting, FID Reporting

Christopher May

Financial Specialist, State Aid & School Finance

Office of Financial Management

517-335-1263 (office) or 517-281-3223 (cell)

MayC@michigan.gov