

E-Rate: Using Funds to Support Technology

Joe Polasek

Office of Systems, Evaluation, and Technology

Michigan Department of Education

Thursday, April 27, 2023

Meet Your State E-rate Coordinator



4/27/2023

www.michigan.gov/mde

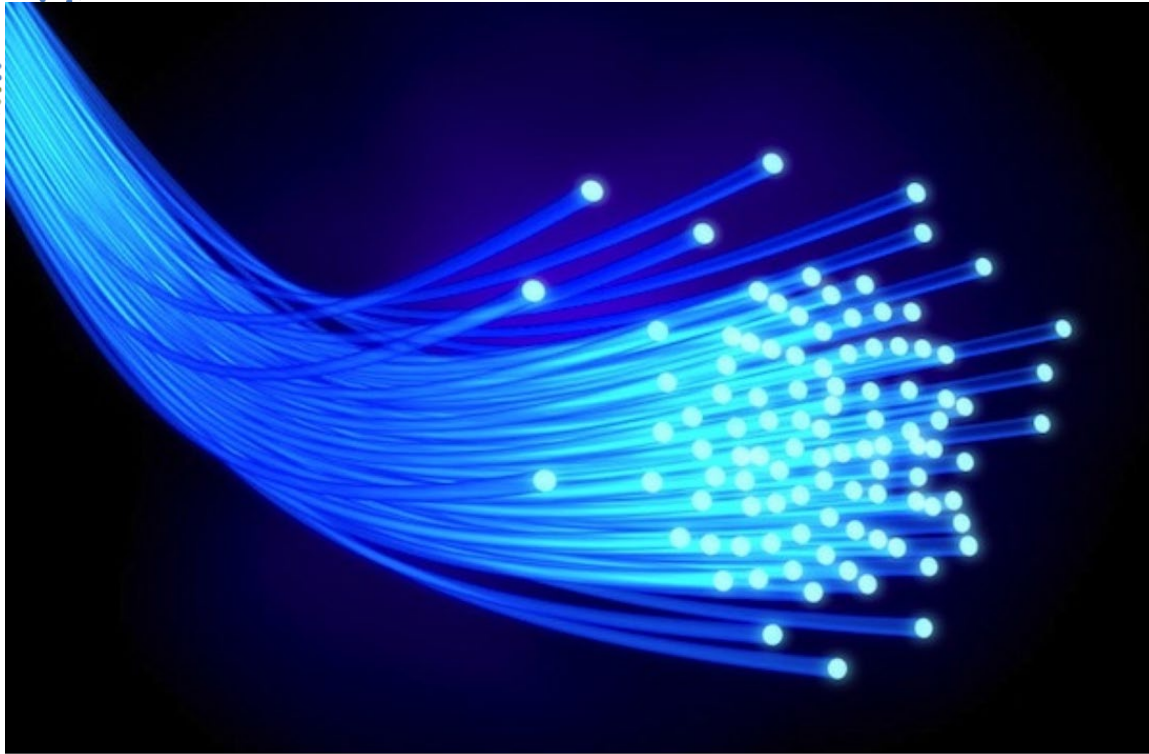
2



Today's Topics

- What is E-rate (just in case)
- Calculating Entity Discounts
- Classifying Reimbursements
- Pending Deadlines
- Questions

E-rate: “To and Through”



[This Photo](#) by Unknown Author is licensed under [CC BY-ND](#)





Calculating Entity Discount Rates

INCOME Measured by % of students eligible for the National School Lunch Program (NSLP)	CATEGORY ONE (C1)		CATEGORY TWO (C2)	
	URBAN Discount	RURAL Discount	URBAN Discount	RURAL Discount
Less than 1%	20%	25%	20%	25%
1% to 19%	40%	50%	40%	50%
20% to 34%	50%	60%	50%	60%
35% to 49%	60%	70%	60%	70%
50% to 74%	80%	80%	80%	80%
75% to 100%	90%	90%	85%	85%

Calculating Entity Discount Rates

For All Entities:

NSLP Eligible Students \div Total Enrolled $=$ Discount %

For CEP Entities:

Discount % \times 1.6 $=$ Discount % w/ CEP



Classifying Reimbursement



4/27/2023

www.michigan.gov/mde

Are E-rate Funds Federal Funds?



Not
Yet



Looming Deadlines

E-Rate Deadlines

- April 28, 2023
 - Form 486 Deadline for FY 2022 Wave 37 approvals
- July 1, 2023
 - Start of FY 2023, service start date for most FY 2023 approved services

ECF Deadlines

- June 30, 2023
 - Service Delivery Deadline for devices and off-campus connections for ECF Window 1 & 2 approved filings



Questions?

Joe Polasek
State E-rate Coordinator
MI Dept. of Education
Polasekj3@michigan.gov
517-335-1291

