

2025-26 MSBO State Testing Tech Updates (November)

Teddy Simmons

Online Readiness Assessment Specialist
simmonst13@michigan.gov

Agenda

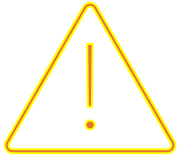
- College Board – Bluebook Update
 - For students testing on Chromebooks, Verified Mode must be turned on.
- WIN Work Readiness Assessment
 - WIN Technology Specifications
 - WIN Technology Checklist
 - WIN Technology Training (November 13)
 - Q & A

College Board Bluebook – Chromebook Verified Mode Requirement



What is Verified Mode?

- A Chromebook kiosk setting that enhances test security
- Enabled by tech staff via the Google Admin console



What Changing?

- Verified Mode will be required for Spring 2026 testing
- Without it, **Bluebook will not launch** on Chromebook



How to Check If it's Enabled

- Open Bluebook on a Chromebook
- Click "**Test Your Device**"
- Look for a checkmark next to **Verified Mode**



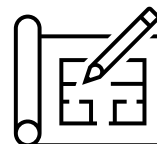
Who Enables It & How


- Only district/school tech staff with Google Admin access
- Setup instructions: bluebook.org/verified-mode

WIN Work Readiness Assessment

- [WIN Technology Specifications](#)
- [WIN Technology Checklist](#)
- [WIN November 13 Technology Coordinator Training \(pdf\)](#)

WIN Tech Specifications





careerreadinesssystem

Technical Requirements

Below are the technical requirements for the WIN Career Readiness System. Please verify and test all requirements before use.

The WIN Career Readiness System requires a device with internet access, a compatible browser, and the installation of the Respondus Lockdown Browser

Minimum Browser Requirements

Browser	Minimum Supported Version
Microsoft Edge	44.17763
Chrome	72.0
Firefox	65.0
Safari	12.0.2

Additional Requirements

Software

- JavaScript must be enabled.
- Any standard PDF reader

Accessories

- Speakers or headphones are required.

Other

- WIN Learning does not support or endorse third party hardware, software, or applications other than the Respondus Lockdown Browser needed for Proctored Assessments.

Proctored Assessment Requirements

Proctored Assessment users must download and install the Respondus Lockdown Browser on each computer used for testing.

Operating System Requirements

Operating System	Minimum Supported Version
Windows*	11
macOS	macOS 14 (Sonoma)
Chromebook**	103
iPad	iPadOS 15

**The Respondus Lockdown Browser is not compatible with Windows 11 S.*

***The Chromebook version of the Respondus Lockdown Browser is an extension.*

Storage Requirements

Operating System	Required Storage Space
Windows	75 MB
macOS	120 MB
Chromebook	4 kB

- For Respondus Lockdown Browser installation instructions and download links, please contact WIN Learning Support at 1-888-717-9461 option 3 or support@winlearning.com.

Page 1

For assistance, contact WIN Learning support at 1-888-717-9461 option 3 or support@winlearning.com

10_2025

WIN Tech Specifications

Supported Devices

- Windows PCs, Macs, and Chromebooks
- Must support WIN Lockdown Browser or Chromebook extension

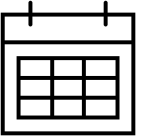
Not Supported

- Tablets and smartphones
- Devices without keyboard/mouse or headphone access

Setup Requirements

- Confirm OS compatibility and install Lockdown Browser
- Ensure devices are fully updated
- Prepare backup devices and headsets

WIN Technology Checklist



Aligns with WINs Technical specifications



Provides a clear timeline for preparation



Ensures test security and accessibility

WIN Monitoring Extensions

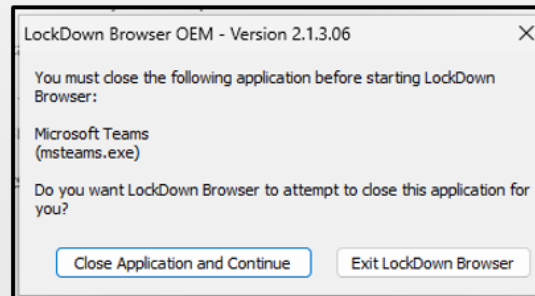
Allowed: Extensions that do not interfere with test delivery

Important Clarification: The WIN Lockdown Browser requires typing assistant, grammar checkers, remote access, AI features and chatbots, collaboration tools, and screen capture software to be disabled during testing. However, it does not require classroom monitoring software to be disabled during test administration

WIN Monitoring Extensions

Prohibited App Detection and Blocking

The lockdown browser is a special web browser used for taking online tests securely. It "locks down" the computer so students can't open other websites, apps, or tools while the test is in progress. When the lockdown browser launches, it will detect and block certain background apps. If any are running, users will see a prompt with options to automatically close the apps, **OR** exit the browser to close them manually.



Blocked app types include:

- Typing assistants and grammar checkers (e.g., Grammarly, Ginger Software, ProWritingAid)
- Remote Access/Remote Control Software (e.g., TeamViewer, AnyDesk, Remote PC)
- AI Features and Chatbots (e.g., Microsoft Copilot, Apple Intelligence, Google Gemini, Chat GPT)
- Collaboration Tools (e.g., Microsoft Teams, Zoom Google Chat and Meets)
- Screen Capture Software

Note: Districts are **not** required to shutdown Child Internet Protection Act (CIPA) classroom management applications that filter and monitor web content.





Questions?