

# Presentation for the MDE/MSBO Workshop

---

Natasha Baker  
State School Reform Officer  
bakern5@michigan.gov  
(517) 284-6970  
[www.michigan.gov/sro](http://www.michigan.gov/sro)

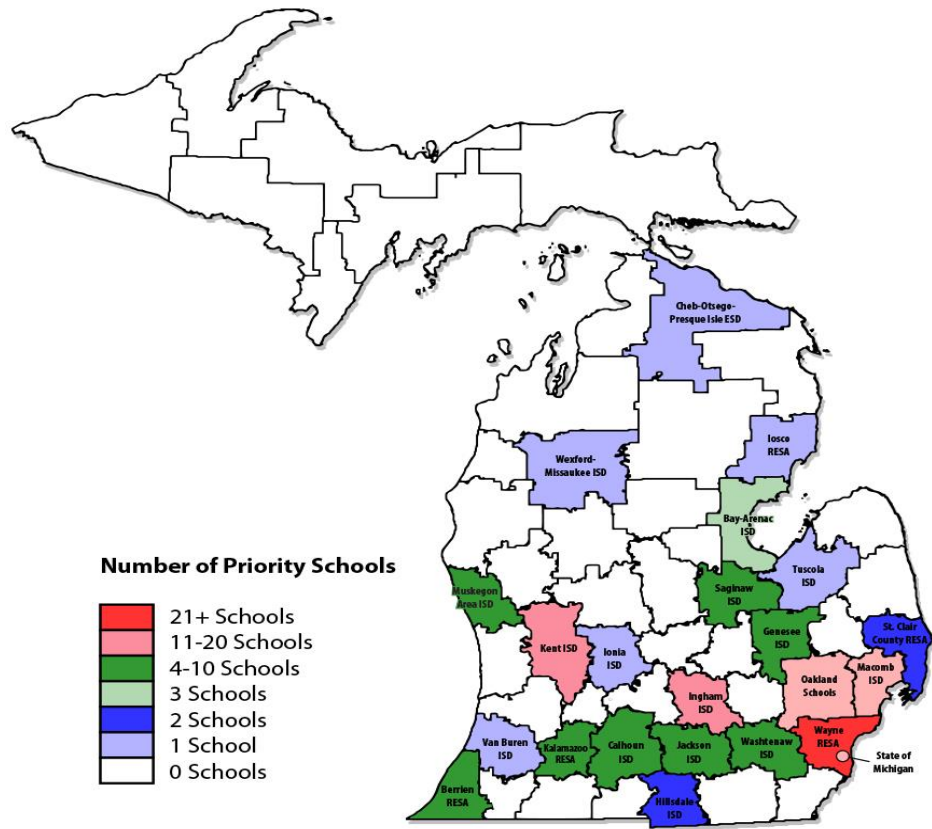
# Mission Statement

*Our mission is to turn Priority Schools into the highest performing schools in the state.*

# **Policies, Authority, & Responsibilities**

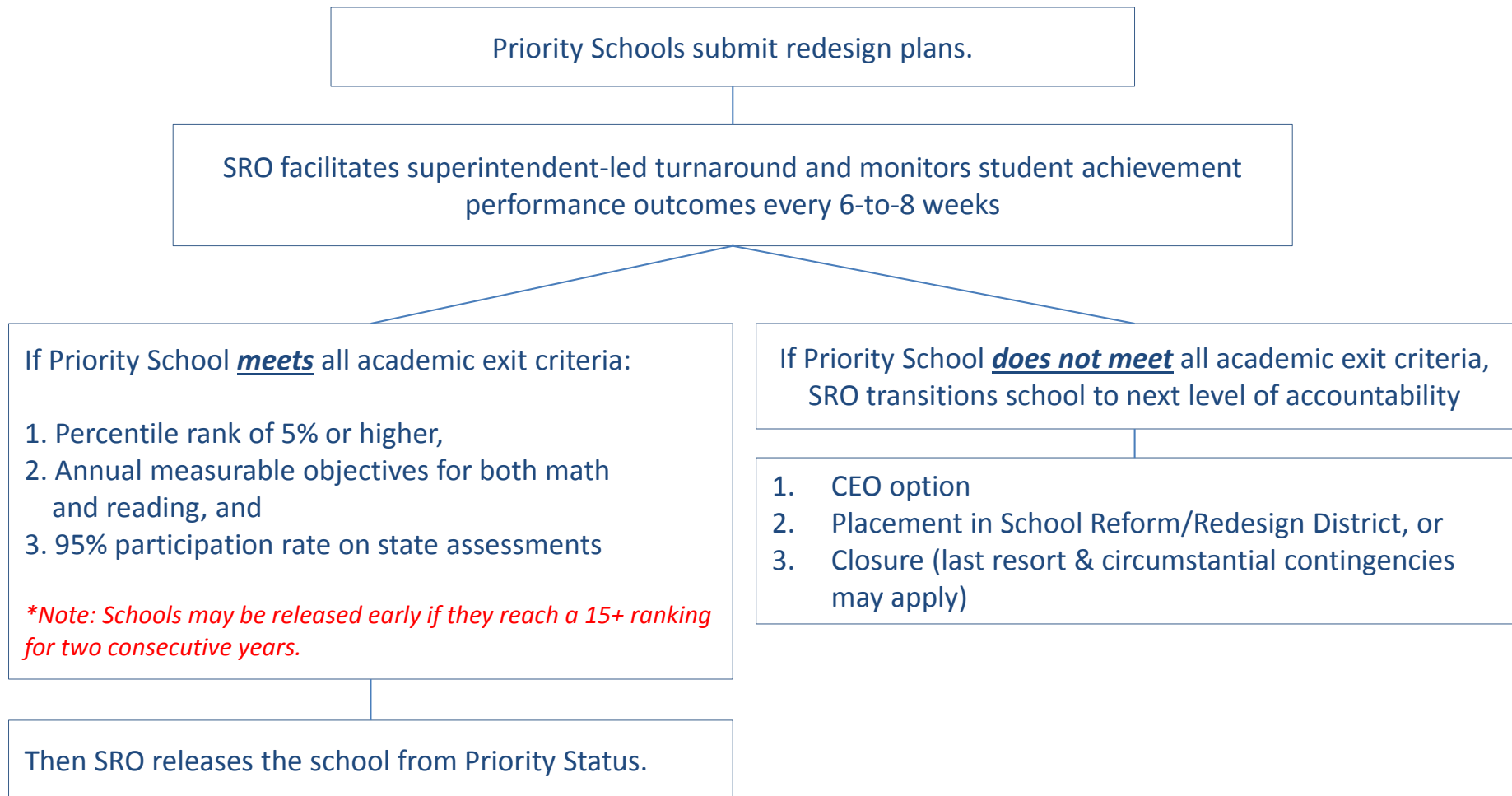
1. Revised School Code 380.1280c
2. Executive Order No. 2015-9
3. Public Act 192
4. Public Act 249

# State School Reform Office - Michigan's Priority Schools by Geographic Region



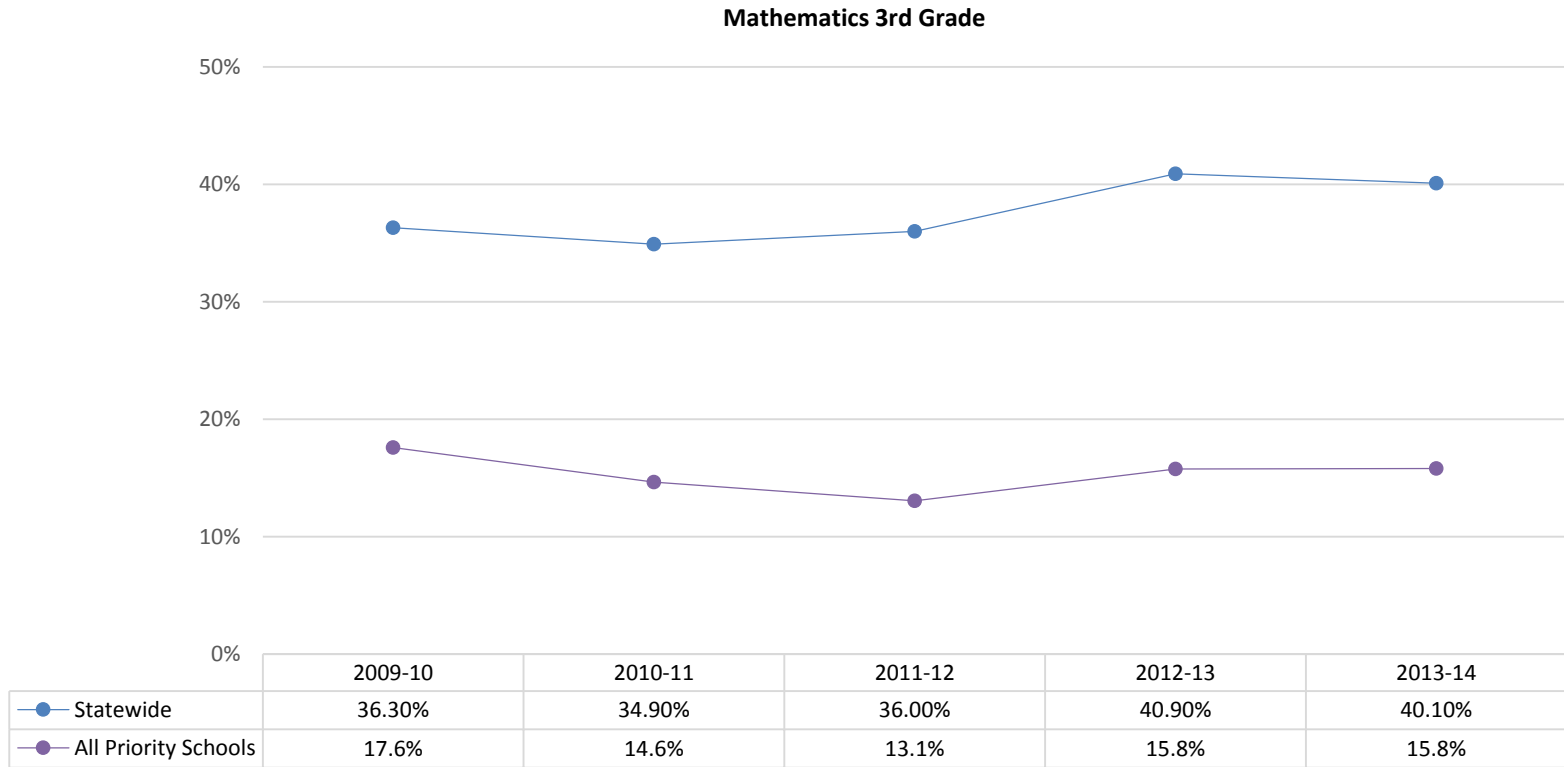
- 1. School Districts = 80
- 2. Priority Schools = 221
- 3. Schools Below 5% = 116
- 4. Over 100,000 Kids

# Academic Accountability Process



# 3<sup>rd</sup> Grade Mathematics

Percent of students scoring Proficient or Advanced in Mathematics, 2009-10 to 2013-14

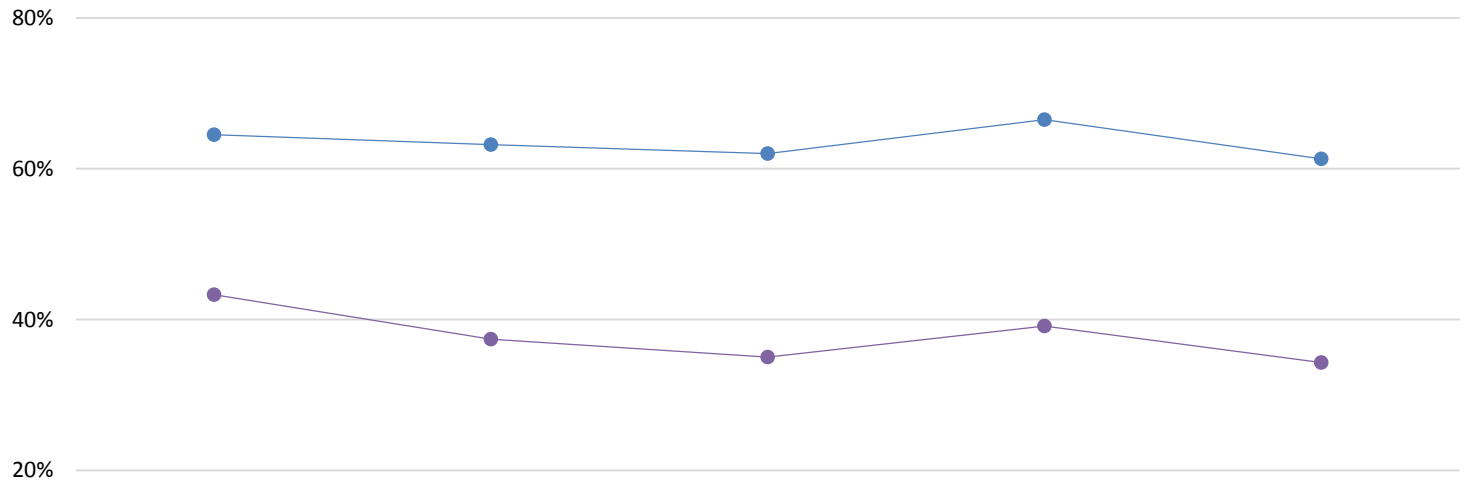


**Note:** Key performance and outcome metrics for Priority Schools July 2015. Data Source: Michigan’s Center for Educational Performance and Information, K-12 School Data Files. (2009-2015) <https://www.mischooldata.org/DistrictSchoolProfiles/EntitySummary/SchoolDataFile.aspx> (accessed July 8, 2015).

# 3<sup>rd</sup> Grade Reading

Percent of Students scoring Proficient or Advanced in Reading, 2009-10 to 2013-14

Reading 3rd Grade



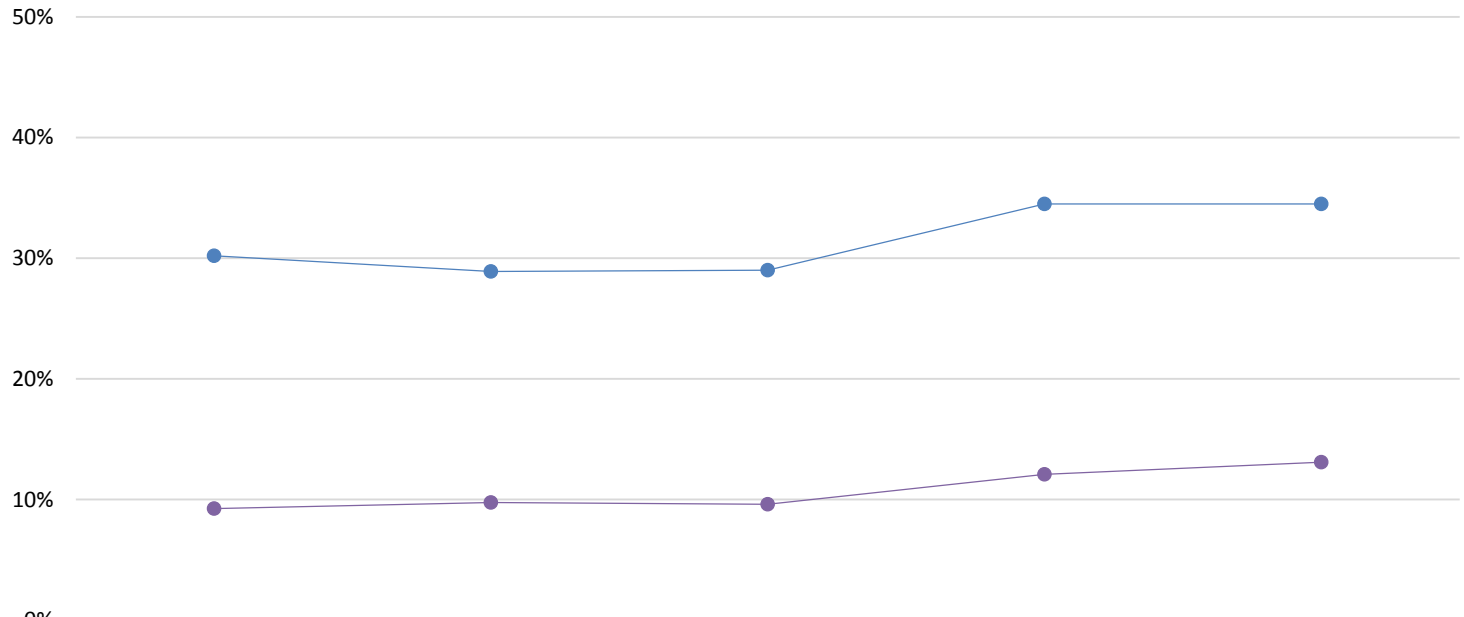
	2009-10	2010-11	2011-12	2012-13	2013-14
Statewide	64.50%	63.20%	62.00%	66.50%	61.30%
All Priority Schools	43.3%	37.4%	35.0%	39.1%	34.3%

**Note:** Key performance and outcome metrics for Priority Schools July 2015. Data Source: Michigan’s Center for Educational Performance and Information, K-12 School Data Files. (2009-2015) <https://www.mischooldata.org/DistrictSchoolProfiles/EntitySummary/SchoolDataFile.aspx.aspx> (accessed July 8, 2015).

# 8<sup>th</sup> Grade Mathematics

Percent of students scoring Proficient or Advanced in Mathematics, 2009-10 to 2013-14

Mathematics 8th Grade



	2009-10	2010-11	2011-12	2012-13	2013-14
Statewide	30.20%	28.90%	29.00%	34.50%	34.50%
All Priority Schools	9.2%	9.8%	9.6%	12.1%	13.1%

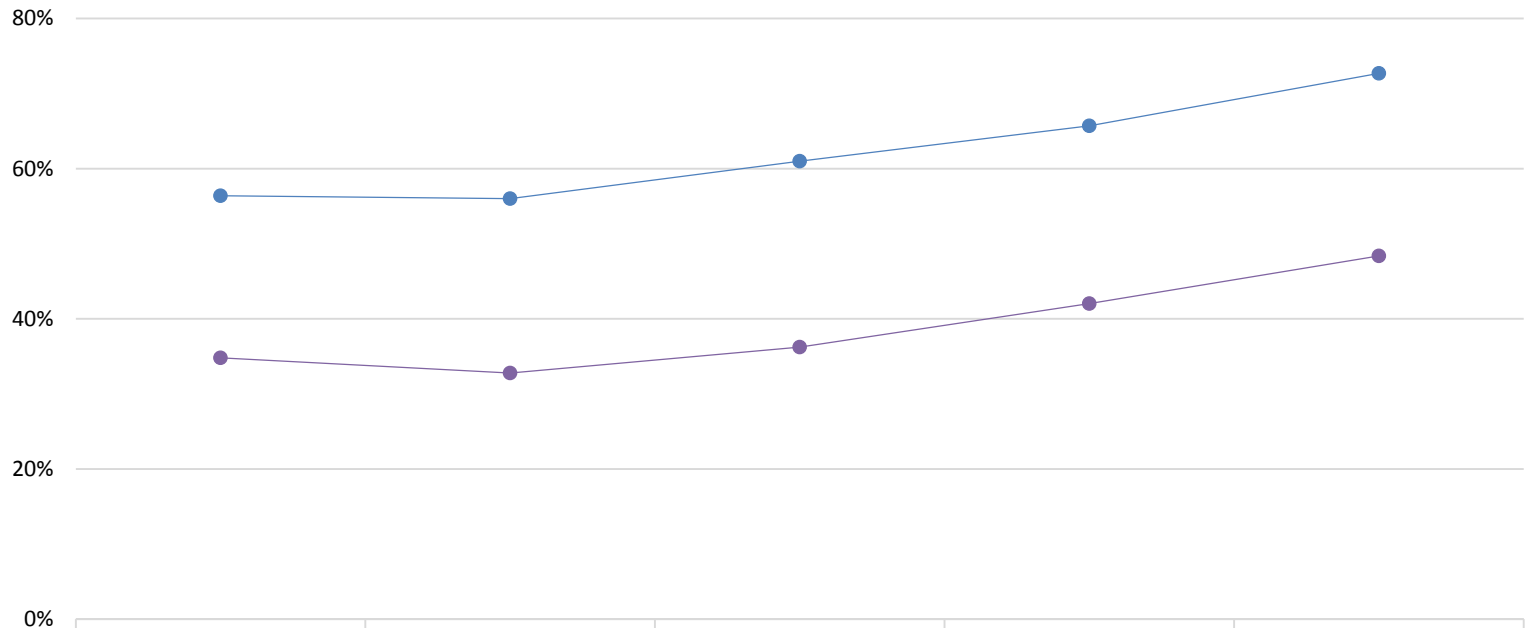
**Note:** Key performance and outcome metrics for Priority Schools July 2015. Data Source: Michigan’s Center for Educational Performance and Information, K-12 School Data Files. (2009-2015) <https://www.mischooldata.org/DistrictSchoolProfiles/EntitySummary/SchoolDataFile.aspx.aspx> (accessed July 8, 2015).



# 8<sup>th</sup> Grade Reading

Percent of students scoring Proficient or Advanced in Reading, 2009-10 to 2013-14

Reading 8th Grade



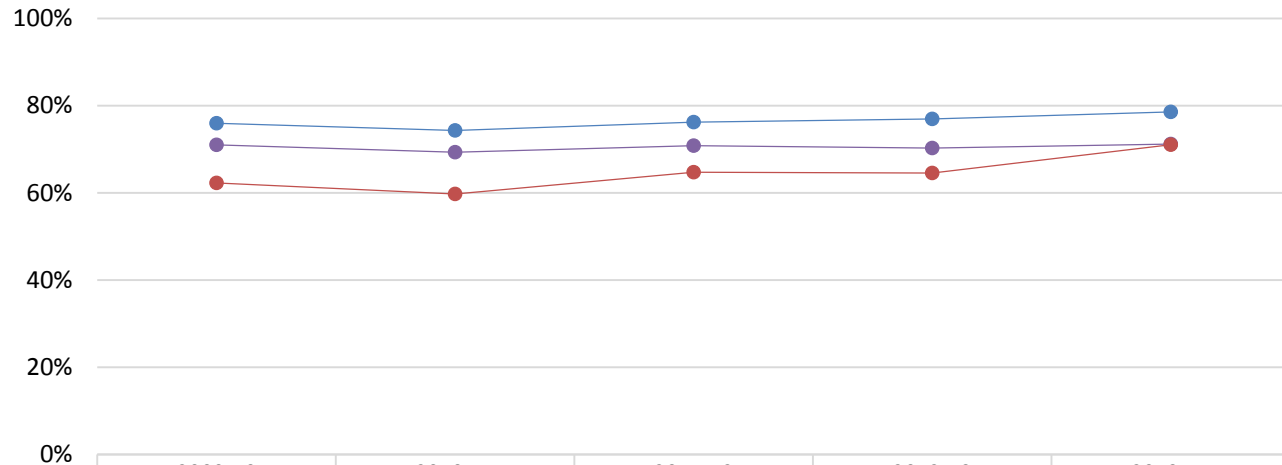
	2009-10	2010-11	2011-12	2012-13	2013-14
Statewide	56.40%	56.00%	61.00%	65.70%	72.70%
All Priority Schools	34.8%	32.8%	36.2%	42.0%	48.4%

**Note:** Key performance and outcome metrics for Priority Schools July 2015. Data Source: Michigan’s Center for Educational Performance and Information, K-12 School Data Files. (2009-2015) <https://www.mischooldata.org/DistrictSchoolProfiles/EntitySummary/SchoolDataFile.aspxaspx> (accessed July 8, 2015).

# Graduation Rate

Percentage of students graduating in 4 years

Graduation Rate



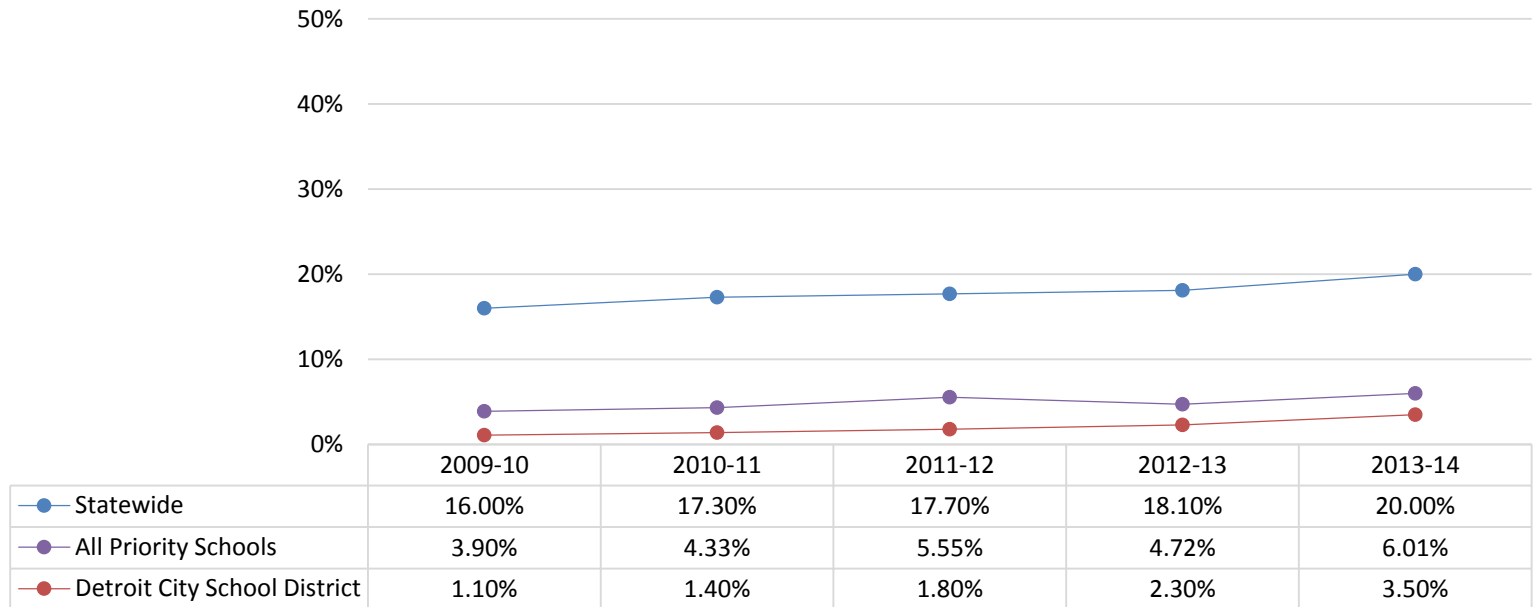
	2009-10	2010-11	2011-12	2012-13	2013-14
State	75.95%	74.33%	76.24%	76.96%	78.58%
All Priority Schools	71.01%	69.33%	70.81%	70.27%	71.21%
Detroit City School District	62.27%	59.74%	64.74%	64.55%	71.05%

**Note:** Key performance and outcome metrics for Priority Schools, and Detroit July 2015. Data Source: Michigan’s Center for Educational Performance and Information, K-12 School Data Files. (2009-2015) <https://www.mischooldata.org/DistrictSchoolProfiles/EntitySummary/SchoolDataFile.aspxaspx> (accessed July 8, 2015).

# College Readiness

Percentage of 11<sup>th</sup> graders who met college readiness standards

Percent Met College Readiness



**Note:** Key performance and outcome metrics for Priority Schools, and Detroit July 2015. Data Source: Michigan’s Center for Educational Performance and Information, K-12 School Data Files. (2009-2015) <https://www.mischooldata.org/DistrictSchoolProfiles/EntitySummary/SchoolDataFile.aspx> (accessed July 8, 2015).