



Michigan Population Trends: The School Age Population

Eric Guthrie
Michigan's State Demographer
January 16, 2018

State Demographer

- Michigan's liaison with the U.S. Census Bureau for most programs including population estimates, projections, data dissemination and the decennial census
- Advisor to state leaders, businesses, non-profits, the media, and the general public on issues related to population and the Census
- Lead for the State Data Center (SDC)

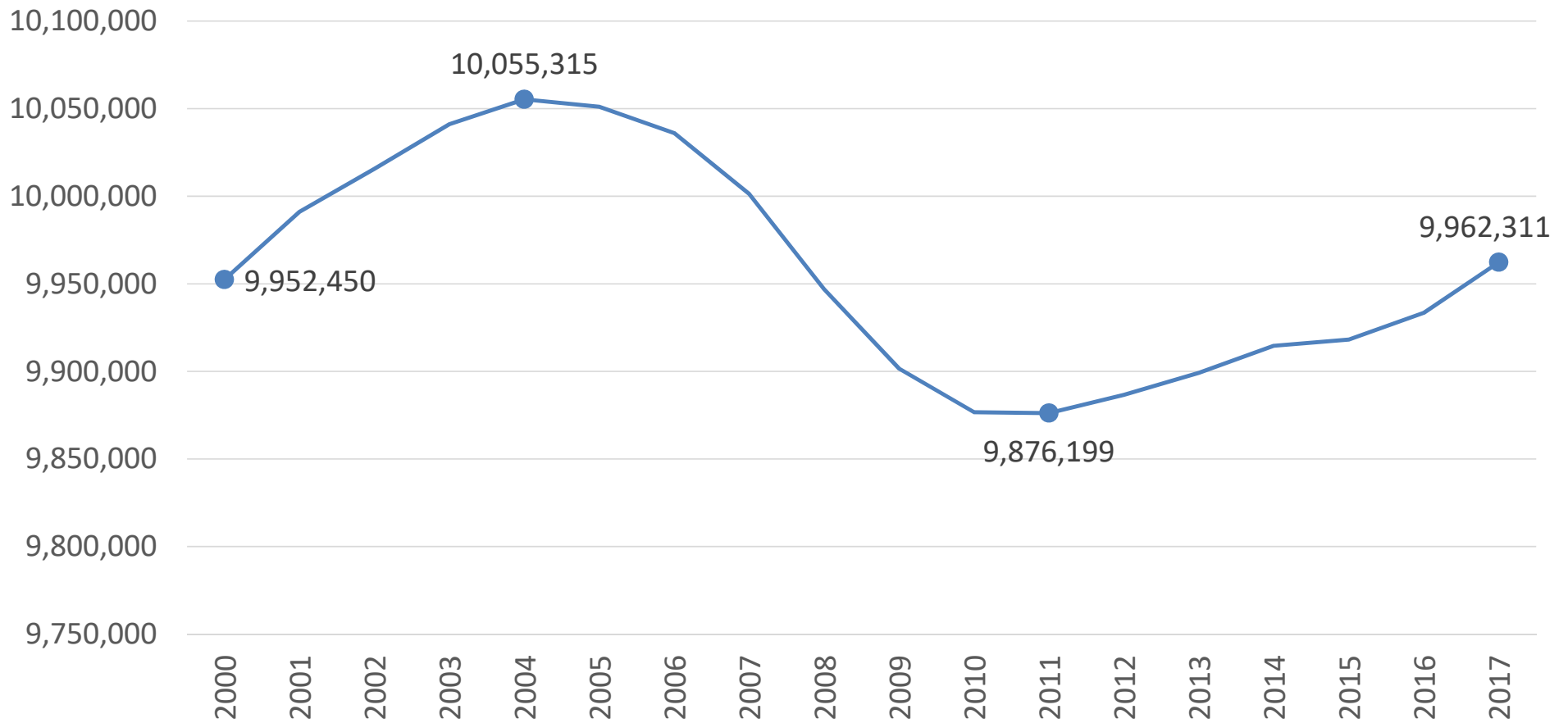
Subscribe to the Bureau's Listserv for updates

- I send out updates when there is a significant data release from the Census Bureau
- The Bureau of Labor Market Information & Strategic Initiatives also sends out regular updates on a wealth of topics
- You can sign up for those updates and pick what topics interest you at: <https://public.govdelivery.com/accounts/MIDEPTTMB/subscriber/new>

Topics

- Population Trends and Projections
- Population Structure
- Migration
- Births
- Conclusions

Michigan's Population

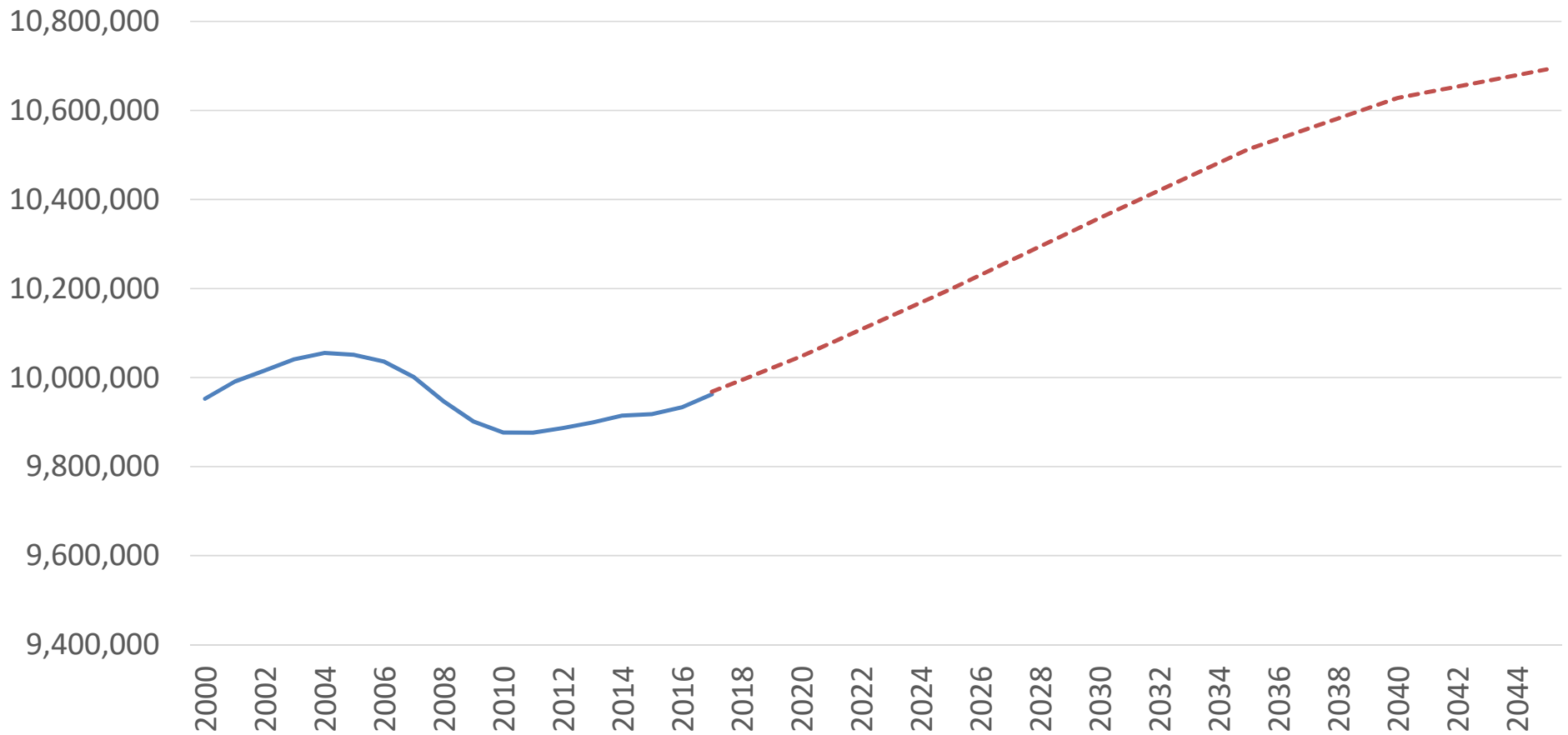


Source: U.S. Census Bureau, Population Estimates



HELP. CONNECT. SOLVE.

Michigan's Projected Population

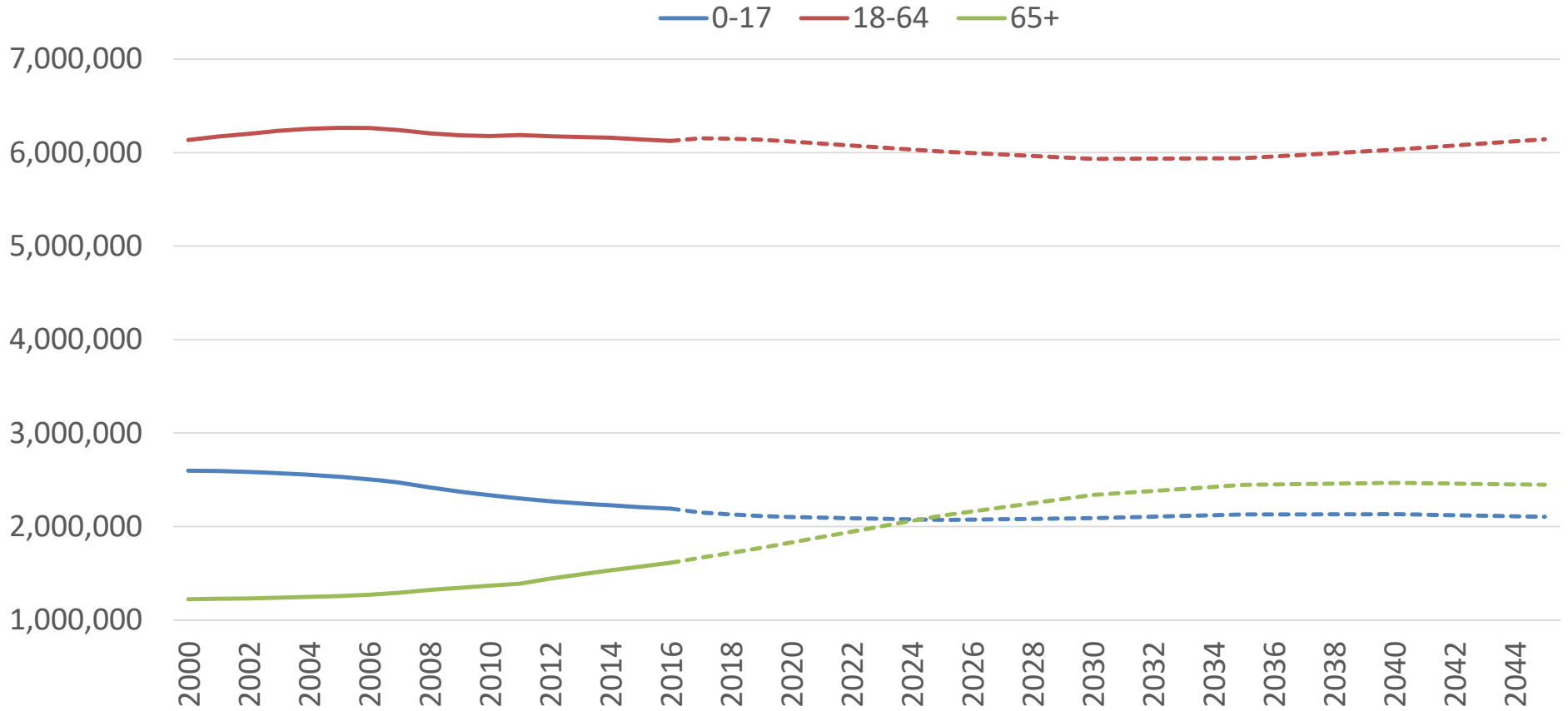


Source: U.S. Census Bureau, Population Estimates; MDOT and U-M's Institute for Research on Labor, Employment, and the Economy (IRLEE), Population Projections



HELP. CONNECT. SOLVE.

Age Specific Projections

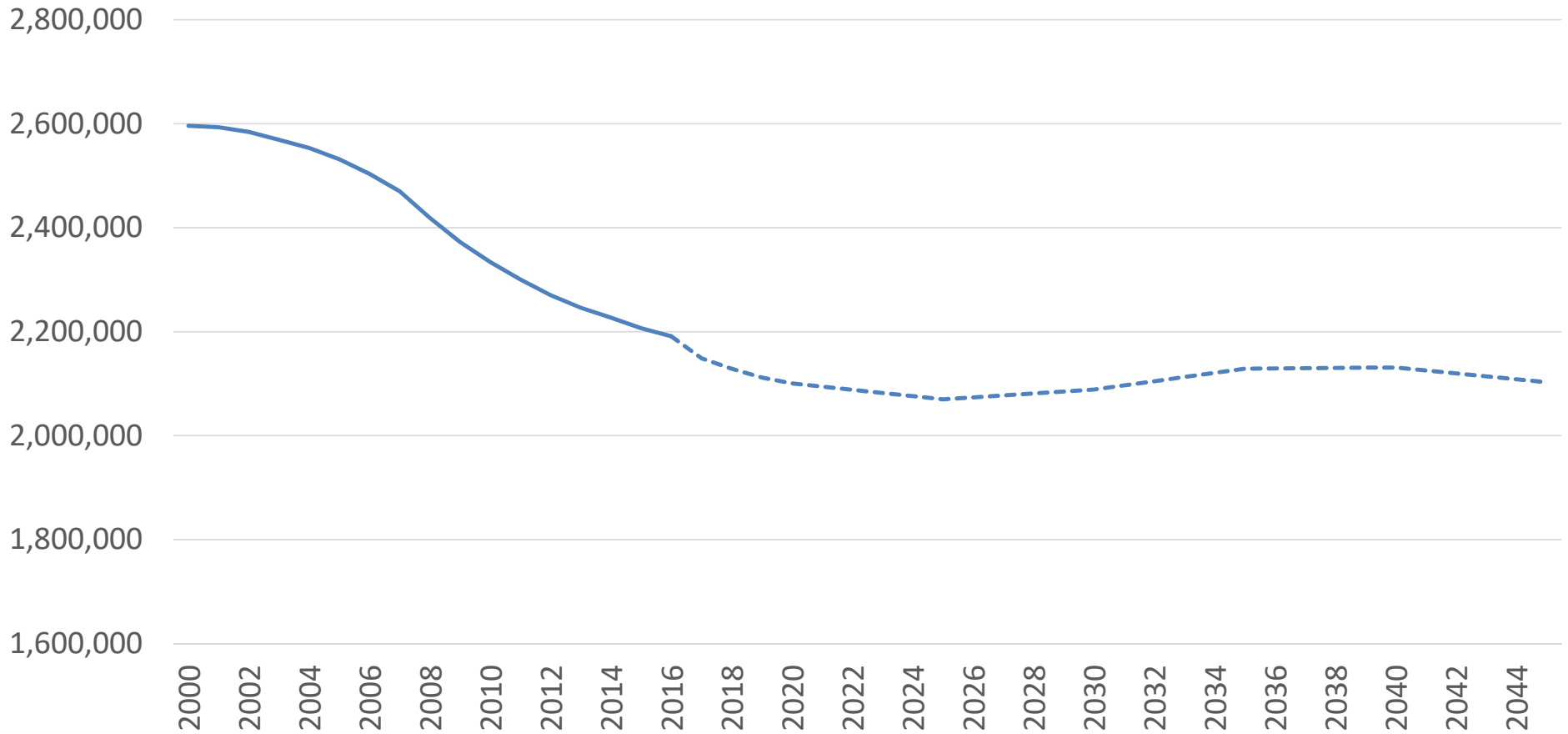


Source: U.S. Census Bureau, Population Estimates; MDOT and U-M's Institute for Research on Labor, Employment, and the Economy (IRLEE), Population Projections



HELP. CONNECT. SOLVE.

Projections for Children (0-17)



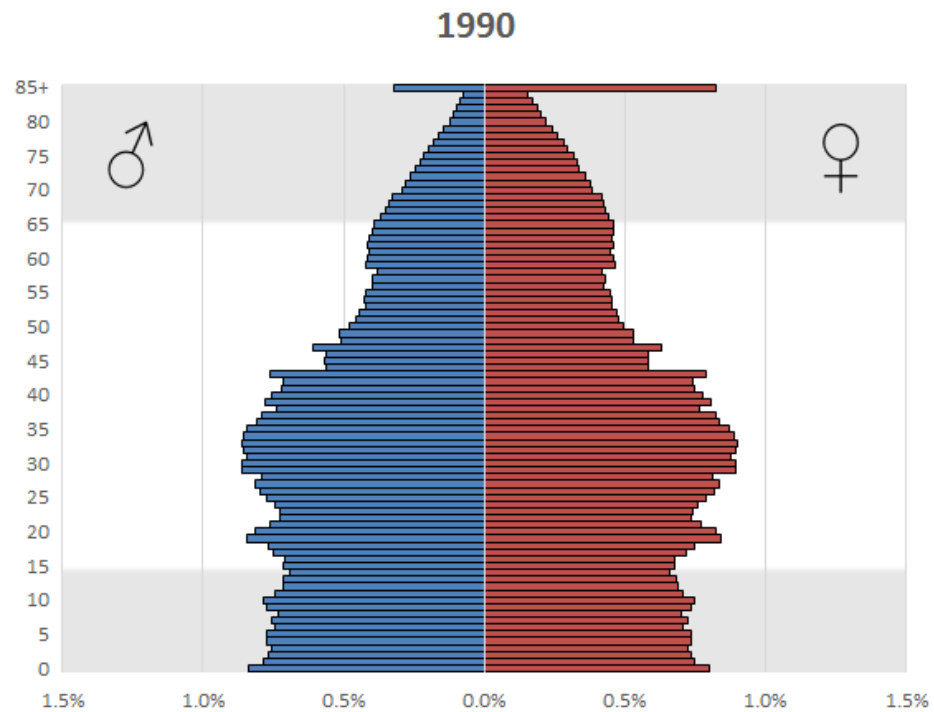
Source: U.S. Census Bureau, Population Estimates; MDOT and U-M's Institute for Research on Labor, Employment, and the Economy (IRLEE), Population Projections

Why Does It Matter?

- There are only three things that affect a population size over time:
 - Births
 - Deaths
 - Migration

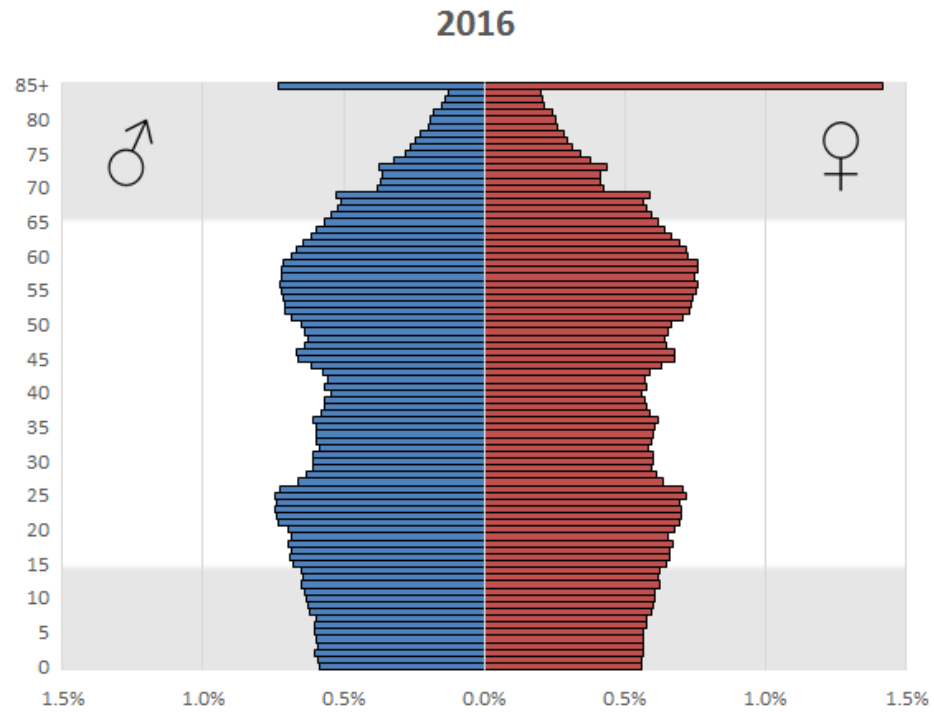
$$\text{Population}_2 = \text{Population}_1 + \underbrace{\text{Births} - \text{Deaths}}_{\text{Natural Change}} + \underbrace{(\text{In-migrations} - \text{Out-migration})}_{\text{Net Migration}}$$

Michigan Age Structure



Source: U.S. Census Bureau, Population Estimates

Michigan Age Structure

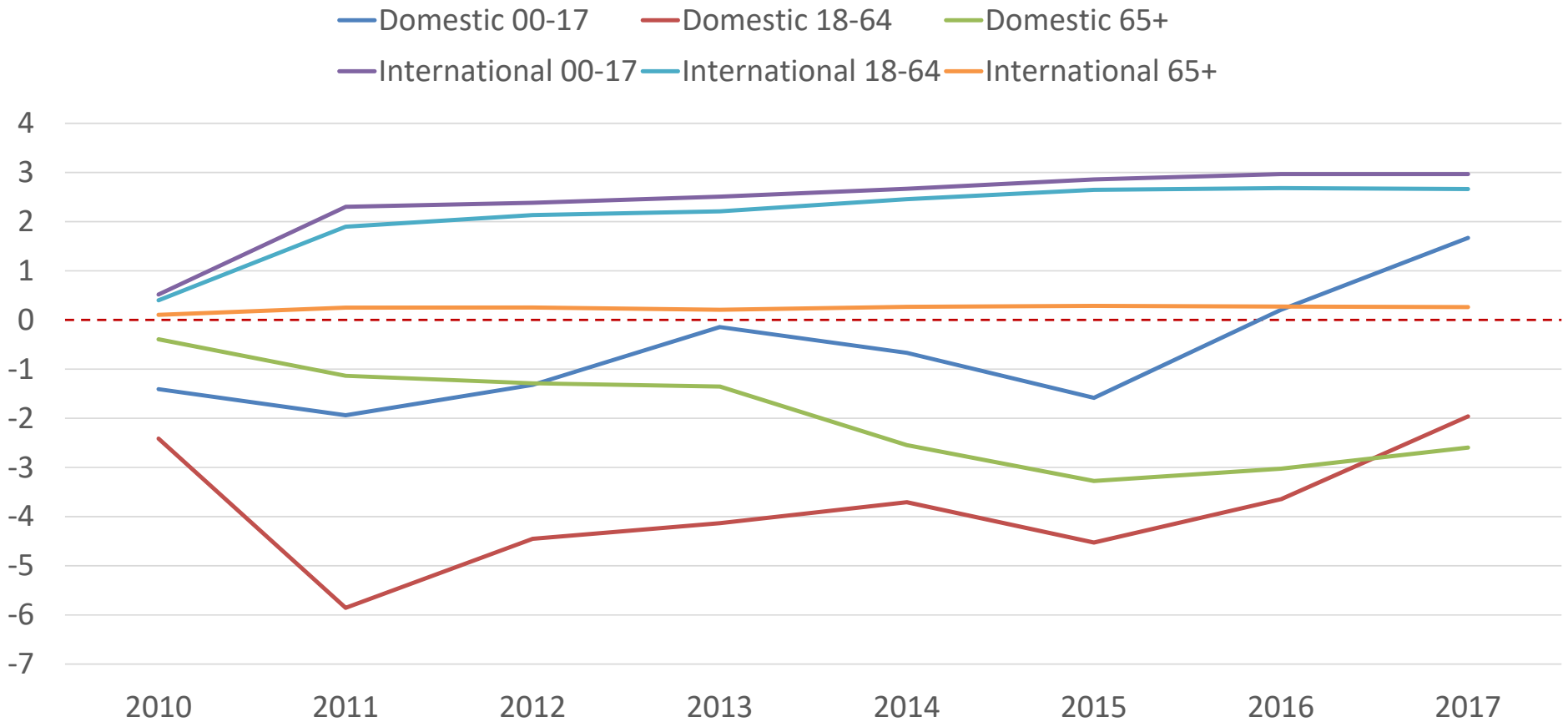


Source: U.S. Census Bureau, Population Estimates

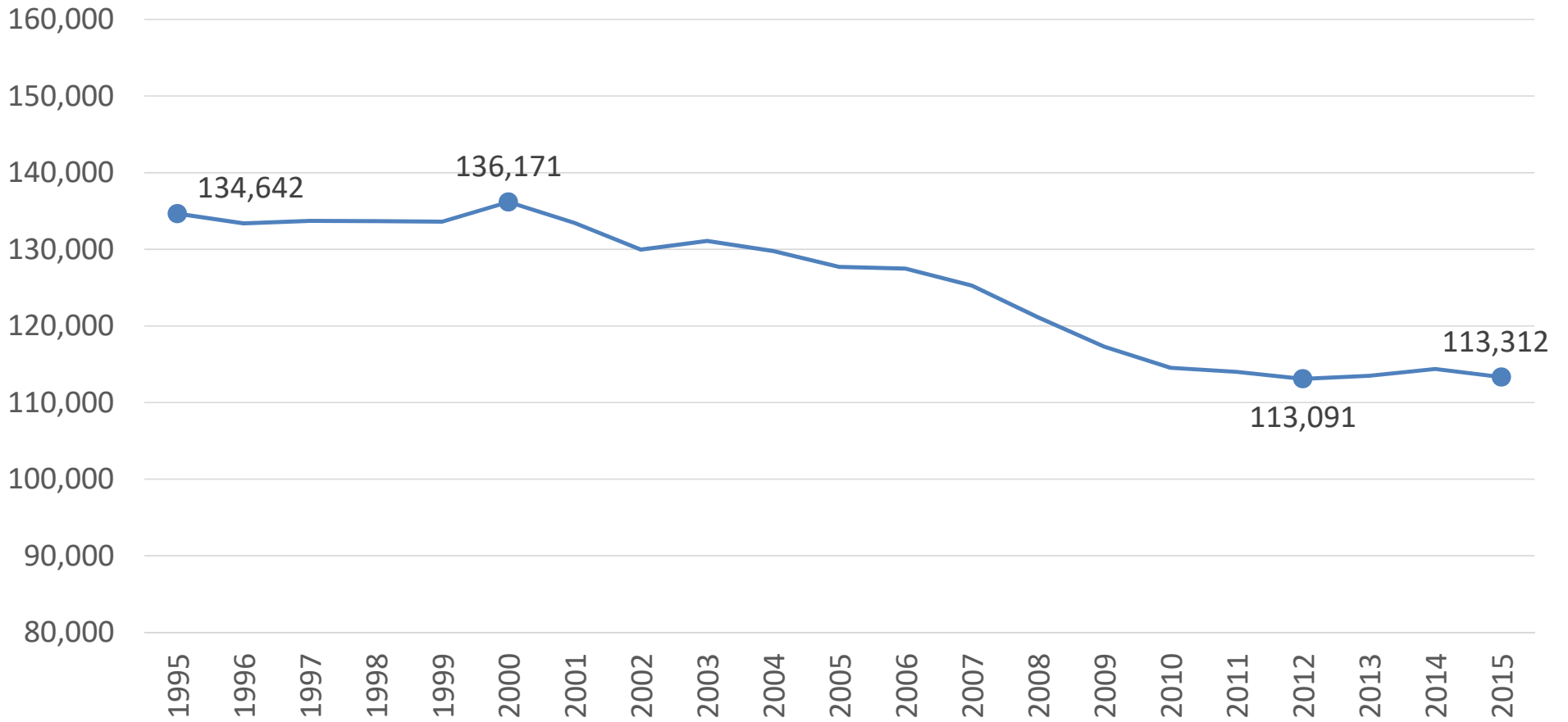
Net Migration



Net Migration Rate by Age Group (Per 1,000 Residents)



Births

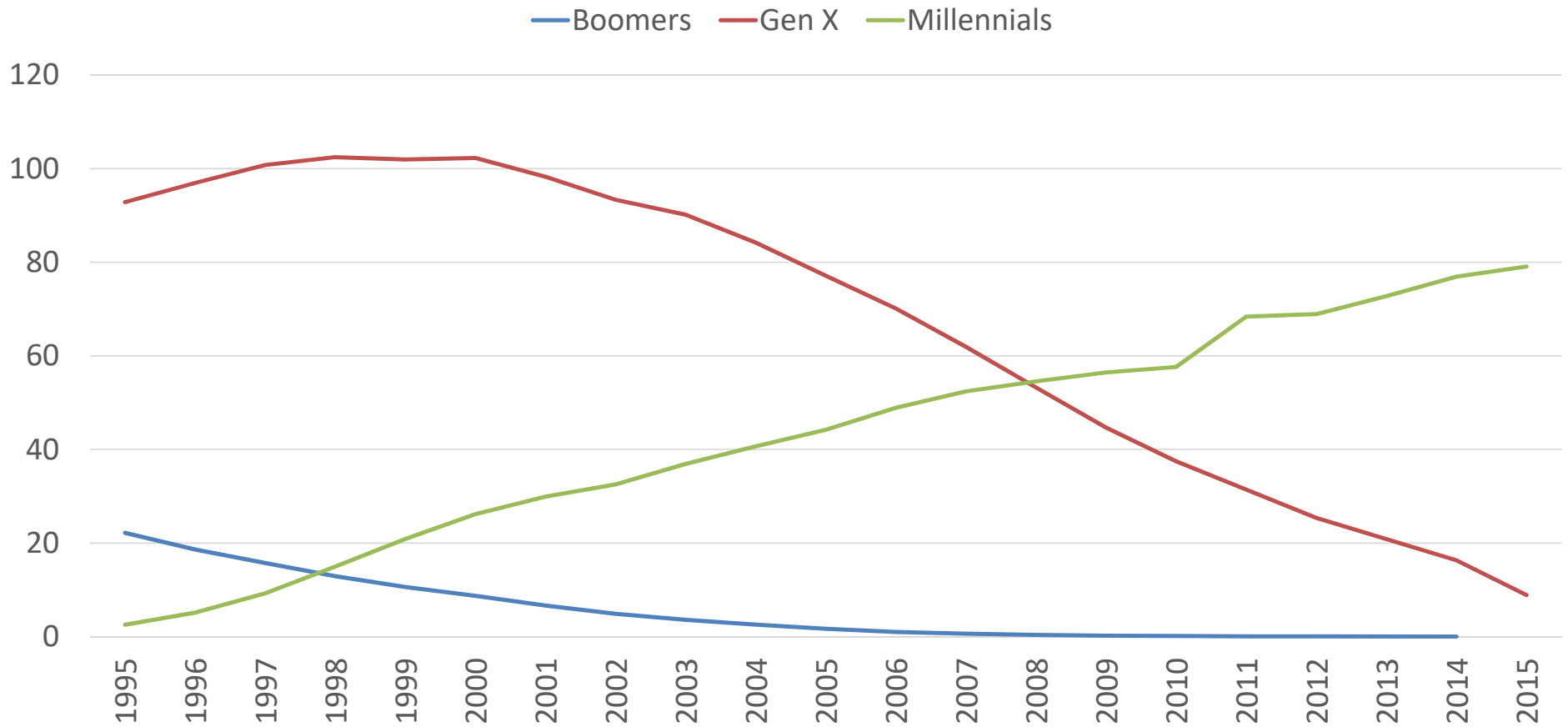


Source: U.S. Department of Health and Human Services, Centers for Disease Control and Prevention (CDC), National Center for Health Statistics (NCHS)

Determinants of Fertility

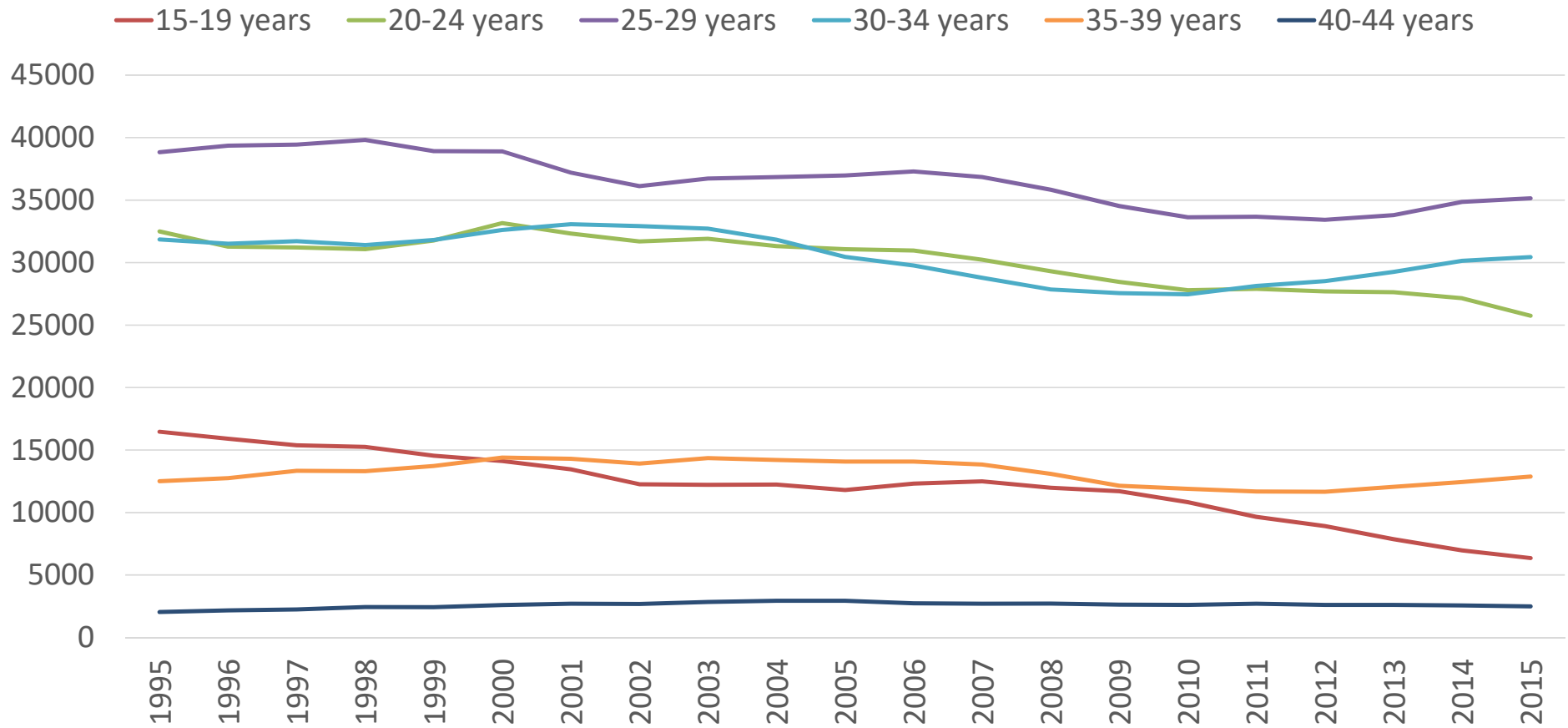
- Biological
 - Age
 - Genetics
 - Environmental
- Social
 - Educational Level of Women
 - Value of Children
 - Cultural Expectations
 - Much, Much More

Fertility by Generation (Births per 1,000 Women)



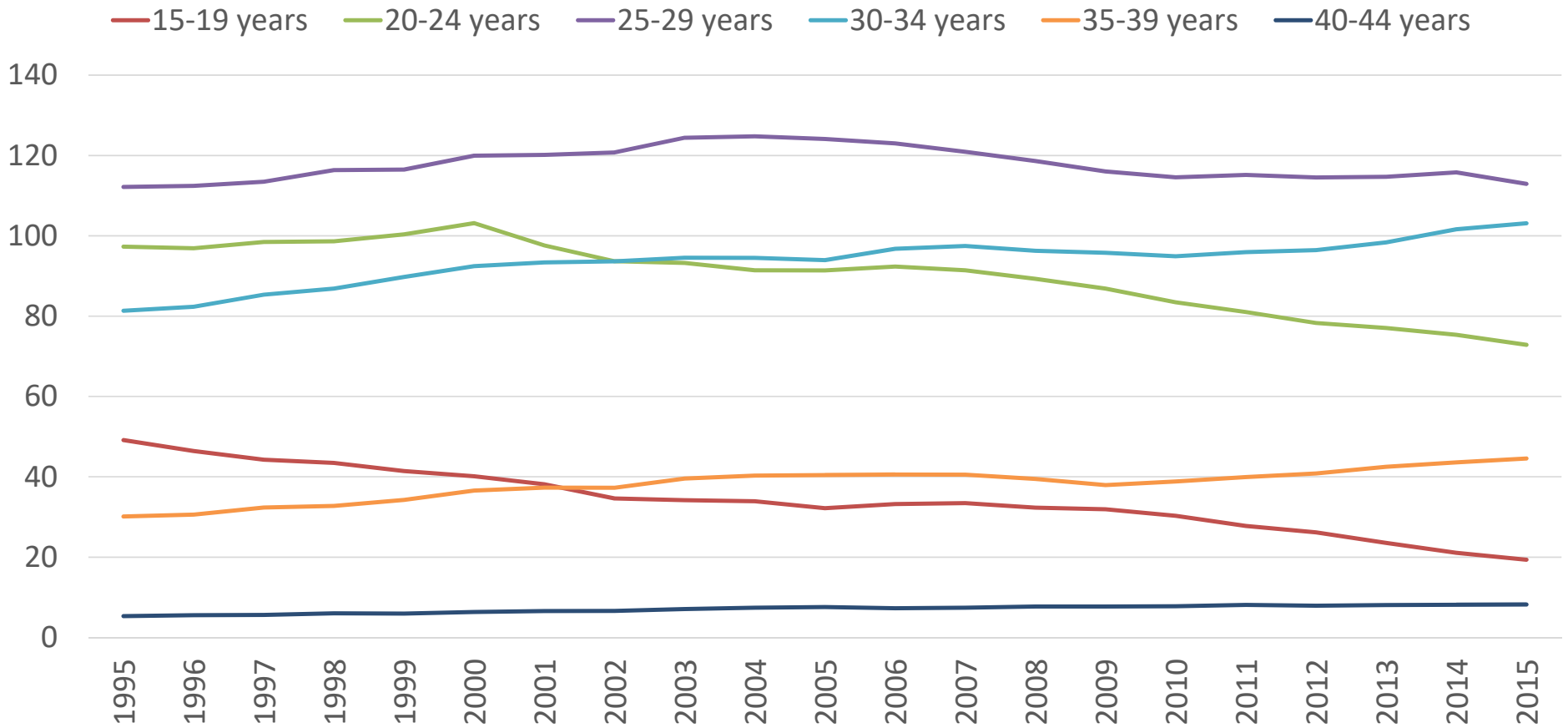
Source: U.S. Department of Health and Human Services, Centers for Disease Control and Prevention (CDC), National Center for Health Statistics (NCHS)

Births by Age Group



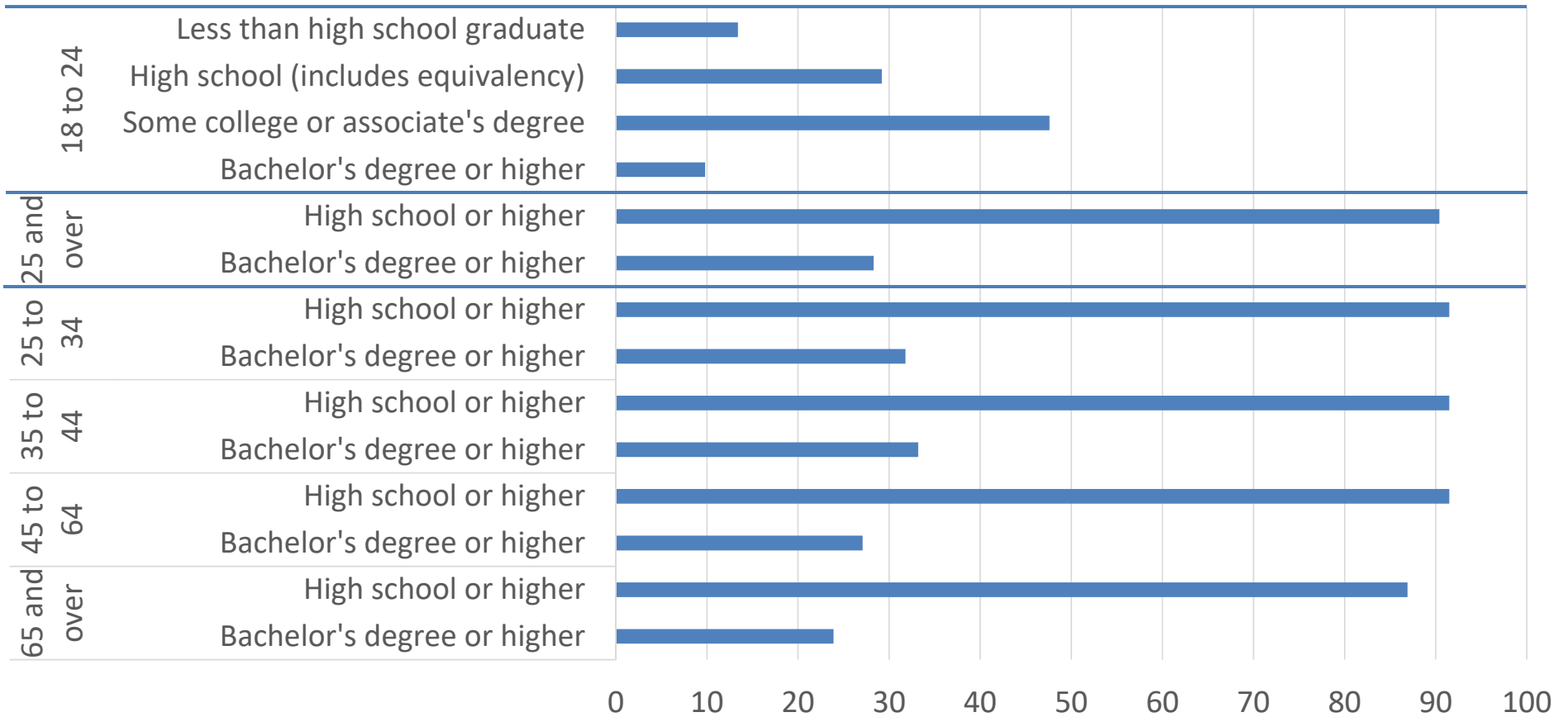
Source: U.S. Department of Health and Human Services, Centers for Disease Control and Prevention (CDC), National Center for Health Statistics (NCHS)

Birth Rate by Age Group (Births per 1,000 Women)

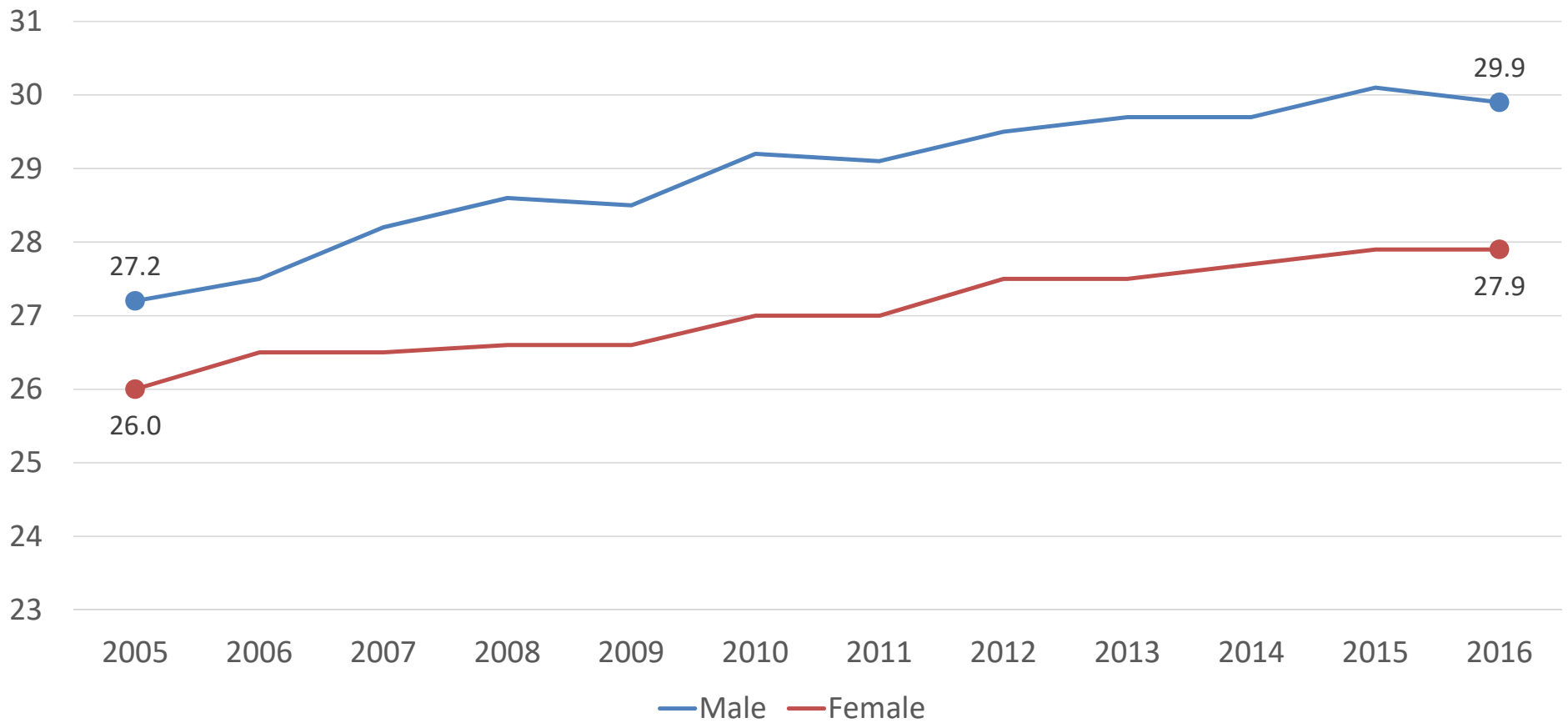


Source: U.S. Department of Health and Human Services, Centers for Disease Control and Prevention (CDC), National Center for Health Statistics (NCHS)

Educational Attainment



Median Age at First Marriage



Increasing Median Ages for Mothers

- Between 2003 and 2015 :
 - Median age for mothers having a first child increased from 25 to 26.
 - Median age for all mothers increased from 27 to 28 years

Conclusions

- Migration patterns are shifting and looking better for the state
 - 2017 estimates show the state had a positive net migration for the first time since before 2001
 - Domestic migration is still negative, but trending in the right direction
- Migration will bring school age children in addition to those that are a result of natural increase
- Projected population increases are expected to result from migration

Conclusions

- Age at first marriage and first child are both increasing, which is resulting in delayed fertility
 - Delayed fertility translates to reduced fertility
- Patterns of fertility are long term patterns that develop in society.
 - Fertility in Michigan and the U.S. more generally has been trending downward for decades.
 - The Total Fertility Rate for Michigan in 2014 was 1.81 versus 1.84 for the U.S.

Conclusions

- Declining fertility will translate into declining enrollment over the next 5 to 10 years, but enrollment should increase some following that period of decline
 - Increases will not get back up to the peak, but declines will stop for a time
- Any decrease or increases in fertility and enrollment will not be experienced evenly across the state
 - Some areas are seeing increases in enrollment even in this period, while other areas will continue to see declines over the entirety of the millennial generation's period of fertility



Thank you

Questions?

Eric Guthrie

Michigan's State Demographer

Department of Technology, Management & Budget

Bureau of Labor Market Information & Strategic Initiatives

Victor Office Building

201 N. Washington Square

5th Floor

Lansing, MI 48913

(517) 241-8667

guthrie@michigan.gov

<http://milmi.org/population>